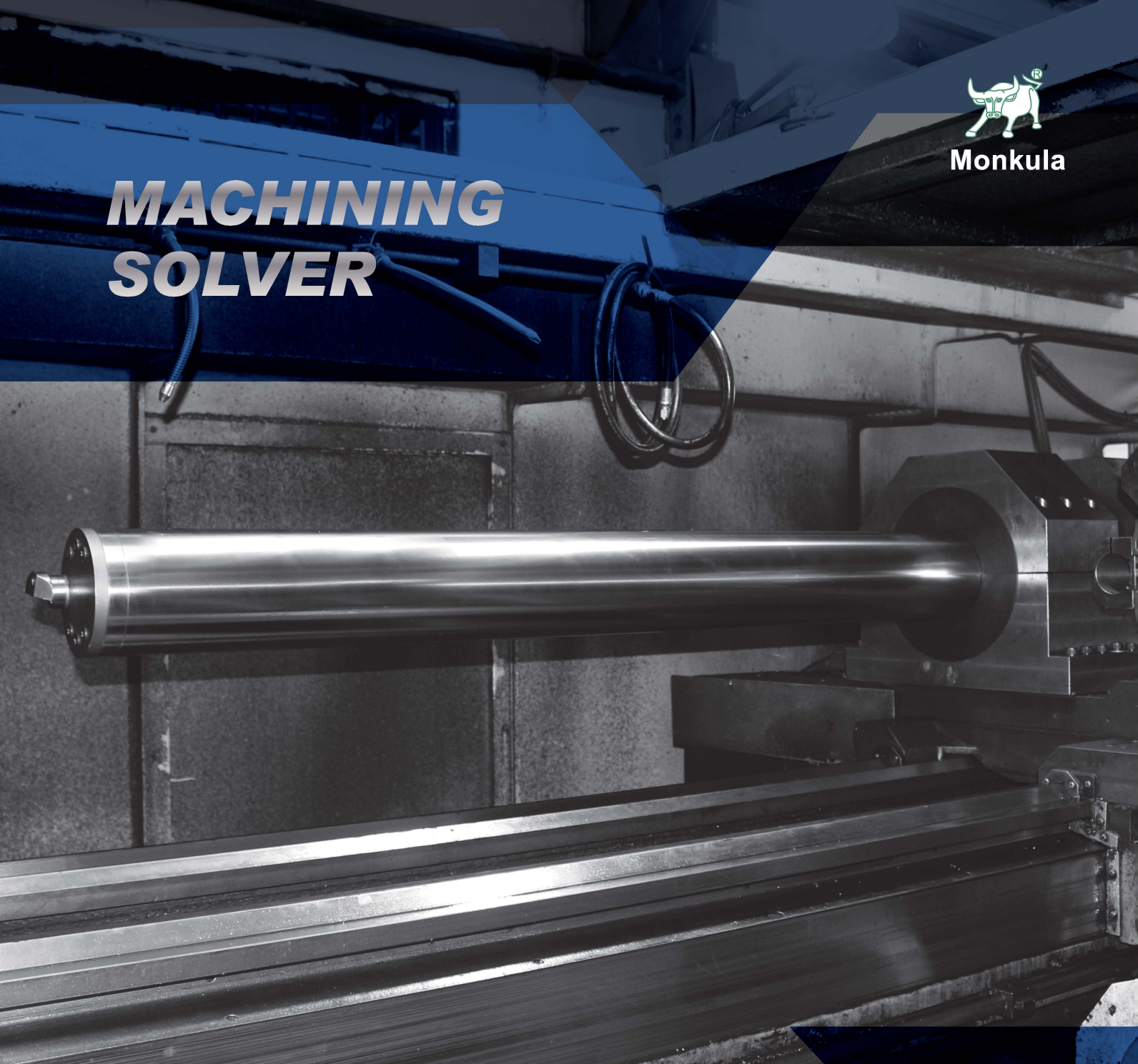




Monkula

# ***MACHINING SOLVER***



| Anti-Vibration Cutting Tools  
| Monkula 抗震切削刀具



## ABOUT MONKULA

鯨庫拉制震股份有限公司原名為映帆企業有限公司，成立於2001年，為一專業的閥類、機械五金零件加工廠，服務終端客群為德、日兩國。2008年轉型研發及製造抗震刀桿，更名為鯨庫拉制震股份有限公司，已逾十四載，行銷遍及全球30餘國。本公司生產設備有CNC車床、五軸加工機、CNC巨型車床。除了標準規格的抗震刀桿外，我們還提供客製化刀具的服務。產品性能亦經過精密機械研究發展中心(PMC)檢測。我們擁有豐富的加工經驗，可以輔助客戶解決困難加工問題。抗震刀桿的應用範圍包括：車床、銑床、搪孔、磨床。

Monkula Enterprise Co., Ltd. original name was YingFan Enterprise Co., Ltd., established in 2001, as a professional valve and mechanical hardware parts processing plant, customers are mainly end-users in Germany and Japan. In 2008, YingFan Enterprise Co., Ltd transformed and began to develop anti-vibration cutting tools and changed company name to Monkula Enterprise Co., Ltd. We have been manufacturing anti-vibration cutting tools for more than 14 years and have been sold in more than 30 countries around the world. The production line has CNC lathe, 5-axis CNC machine, CNC giant lathe. In addition to the standard specifications of anti-vibration cutting tools, we also provide customized tooling services. Besides, product performance is also tested by the Precision Machinery Research and Development Center (PMC). We have extensive machining experience to assist our customers in solving difficult machining problems. The application range of the anti-vibration cutting tools includes: lathe, milling machine, boring and grinding machine.



發明專利: Invention patent

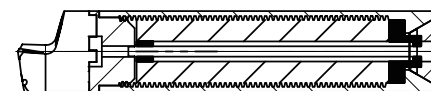
## 制震器原理 作用力與反作用力&頻率反制

本公司的制震器採螺紋狀設計，能增加與桿體的接觸面積，當進行切削時，制震器會抵消刀桿所產生的振動頻率。刀桿柄徑不同，產生的振動頻率也不同。柄徑越小，振動頻率越高，柄徑越大，振動頻率越低。

### Damper system principle action force and reaction force & frequency counteraction

The damper system is threaded design and can increase the contact area with the tool. When the tool is cutting, the damper system counteracts the vibration frequency generated by the tool. When the tool diameter is different, the vibration frequency will be different. The smaller the tool diameter, the higher the vibration frequency, the larger the tool diameter and the lower the vibration frequency.

### Structure of Damper System 制震器結構



## CONTENT

- |           |   |               |
|-----------|---|---------------|
| <b>01</b> | Removable Cutting Head Turning Tool<br>可拆式車刀- 活笛刀                               | / P 5         |
| <b>02</b> | Anti-Vibration Cutting Sleeve with Coolant System<br>中心出水抗震刀套                   | / P 6         |
| <b>03</b> | FI Anti-Vibration Turning Tool With Coolant Hole-Super Toughness F I 擾頻抗震車刀     | / P 7         |
| <b>04</b> | CP Removable Type Anti-Vibration Boring Bar<br>C P 抗震車刀                         | / P 8         |
| <b>05</b> | Removable Type CI Anti-Vibration Boring Bar<br>C I 抗震車刀                         | / P 9         |
| <b>06</b> | Chatter off type Anti-Vibration Cutter<br>一體式抗震車刀- 杓爪刀                          | / P 10 - P 12 |
| <b>07</b> | M3S Anti-Vibration Boring Bar<br>M3S 抗震車刀                                       | / P 13- P 17  |
| <b>08</b> | MR3S Anti-Vibration Boring Bar<br>MR3S 抗震車刀                                     | / P 18        |
| <b>09</b> | Removable Type Anti-Vibration Boring Bar<br>三叉式抗震車刀                             | / P 19        |
| <b>10</b> | TSC Removable Type Anti-Vibration Boring Bar<br>T S C 抗震車刀                      | / P 20- P 21  |
| <b>11</b> | Giant Anti-Vibration Boring Bar<br>巨型抗震車刀                                       | / P 22        |
| <b>12</b> | Removable Cutting Head<br>可換式車刀頭  | / P 23- P 35  |
| <b>13</b> | Combination Type Anti-Vibration Boring Bar<br>組合式抗震車刀                           | / P 36- P 37  |
| <b>14</b> | Y-Type(Anti-Vibration) External Turning Tool (With Cool Hole)<br>Y型(出水)(抗震)外徑車刀 | / P 38- P 44  |
| <b>15</b> | Custom-Made Product<br>訂製產品   | / P 45        |

## 刀片選用方面 INSERT SELECTION

### 1 Insert shape selection 刀片形狀的選用:



### 2 Entering angle selection 切入角的選用: F 91° > U 93° > Q 107°

### 3 Clearance angle of Insert selection 刀片逃隙角選用: P 11° > C 7° > B 5° > N 0°

### 4 Insert corner radius selection 刀尖R角選用: 0.4mm > 0.2mm > 0.8mm

// Insert corner radius 0.4mm: Less cutting resistance, there is less tendency for vibration.

R角0.4mm的刀片: 切削阻力較小, 較不易引起震動

// Insert corner radius 0.2mm: It is recommended for high L/D and suitable for light cutting.

R角0.2mm的刀片: 建議用於高倍數, 適合輕切削

// Insert corner radius 0.8mm: Larger cutting resistance, there is higher tendency for vibration.

It is recommended for low L/D (3D-5D) and suitable for roughing.

R角0.8mm的刀片: 切削阻力較大, 較易引起震動, 建議用於低倍數, 適合粗車

■ It is not recommended to use Insert corner radius more than 0.8mm.

不建議使用R角0.8mm以上的刀片

## 加工條件方面 MACHINING CONDITION

### 1 Cutting speed (Vc : m/min) 切削速度:

// It is recommended to be consistent with the machining conditions of the insert.

建議與刀片的加工條件一致

// Below Vc 80 m/min will cause the insert wear and vibration.

低於米速80會造成刀片磨耗及引起震動

■ In-plant test Vc 80m/min ~ Vc 300m/min works better.

廠內測試 Vc 80m/min ~ Vc 300m/min 效果較佳

### 2 Feed speed(F : mm/rev) 進給速度:

// The roughing feed is between 0.2 mm/rev and 0.3 mm/rev.

粗車進給約0.2mm/rev~0.3mm/rev之間

// If the finishing feed is less than 0.1mm/rev, the cutting speed must be increased to more than

Vc 160 m/min to obtain a better cutting surface.

若精修進給小於0.1則須將米速提高到160以上, 才可得到較好的表面粗度

## 夾持 CLAMP



### 1 It is recommended to use Anti-Vibration Cutting Sleeve to clamp the cutting tools.

建議使用抗震刀套夾持

### 2 Since anti-vibration cutting sleeve completely encases the bar, not cylindrical sleeve with screws, therefore, it is more stable and will not damage the damper system.

由於抗震刀套將刀桿完全包住夾緊, 非一般刀套螺絲鎖固, 因此較為穩定也不會傷及制震器

# 可拆式車刀-溛笛刀

## Removable Cutting Head Turning Tool

Invention Patentt 發明專利  
I606877

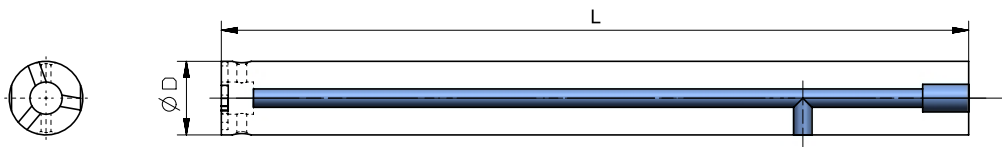


Material :SNCM439(Alloy Steel)  
材質: 藍十字合金鋼  
Hardness: HRC 42  
硬度: HRC 42度

Material :SCM440(Alloy Steel)  
材質: 紅十字合金鋼  
Hardness: HRC 42  
硬度: HRC 42度

### Features 特色

01. The cutter heads are high-pressure chip breaking coolant spray design, which is conducive to chip breaking.  
刀頭均採用符合高壓斷屑噴水設計，有利於排斷屑
02. Patented side coolant inlet, the cutter holder does not need a back cover and does not a coolant pipe. Not only can directly guide the coolant out of the center, but also can stretch to a limited length without cutting.  
專利的側邊進水方式，刀座無需後蓋，無需接水管。不僅可直接導引中心出水，且可有限度伸縮長度，不需要裁切。



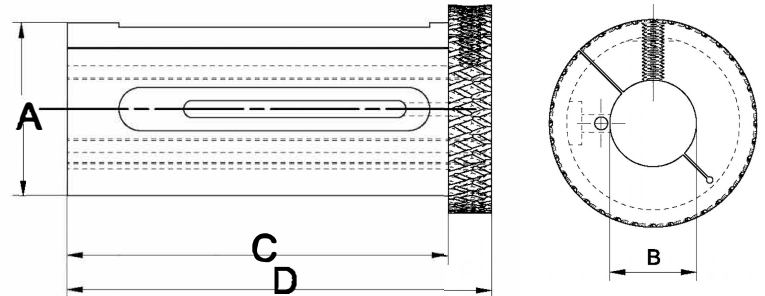
Order No.	ØD (mm)	L (mm)	可換式車刀頭 Removable Cutting Head	Screw T	Wrench U
A16-123	16	123	CP1-16-S/Y/P-Type	M4	2
A18-128	18	128	CP1-1-18-S/Y/P-Type		
A20-131	20	131	CP2-20-S/Y/P-Type		
A25-142.5	25	142.5	CP3-25-S/Y/P-Type	M6	3
A32-156	32	156	CP4-32-S/Y/P-Type		
A40-176.5	40	176.5	CP5-40-S/Y/P-Type		

# 中心出水抗震刀套

## Anti-Vibration Cutting Sleeve with Coolant System

Invention Patent 發明專利  
I606877

Material: SCM415 ( Alloy Steel )  
材質: 綠十字合金鋼  
Hardness: HRC 58°  
硬度: HRC 58度



### Features 特色

01. C-type completely encases the bar, stable clamping and improve anti-vibration effect.  
C型包覆, 夾持穩定, 增加抗震效果
02. Can reduce insert consumption and increase cutting speed and productivity.  
可降低刀片耗損並提高加工線速度與切削量
03. Not easily deformed, easy to disassemble and assemble from tool holder.  
不易變形, 拆裝於刀座方便
04. With side hole inlet turning tools, no need to connect water tube, Also the hole on the front of the sleeve can take off the screw to pass-through the water. Can use for shank without coolant hole.  
搭配側孔進水刀桿, 無需另外接管, 也可以打開前方噴水孔由前端噴水, 搭配無中心出水刀桿
05. Clamping with anti-vibration cutting sleeve prevents the carbide tool from breaking.  
使用抗震刀套夾持可避免鎢鋼刀桿斷裂
06. It is not recommended to mill the surface on turning tools to maintain tool completeness and increase strength.  
建議刀桿不銑平面, 以保持刀桿的完整性並提升強度

Order No.	A	B	C	D
MK32-S08	32	8	76	86
MK32-S10	32	10	76	86
MK32-S12	32	12	76	86
MK32-S14	32	14	76	86
MK32-S16	32	16	76	86
MK32-S18	32	18	76	86
MK32-S20	32	20	76	86
MK32-S25	32	25	76	86

Order No.	A	B	C	D
MK40-S08	40	8	88	98
MK40-S10	40	10	88	98
MK40-S12	40	12	88	98
MK40-S14	40	14	88	98
MK40-S16	40	16	88	98
MK40-S18	40	18	88	98
MK40-S20	40	20	88	98
MK40-S25	40	25	88	98
MK40-S32	40	32	88	98

Order No.	A	B	C	D
MK50-S08	50	8	102	112
MK50-S10	50	10	102	112
MK50-S12	50	12	102	112
MK50-S14	50	14	102	112
MK50-S16	50	16	102	112
MK50-S18	50	18	102	112
MK50-S20	50	20	102	112
MK50-S25	50	25	102	112
MK50-S32	50	32	102	112
MK50-S40	50	40	102	112

提供訂製特殊柄徑及特殊長度刀桿 Customized tool diameter and length are available.

# FI 擾頻抗震車刀

## FI Anti-Vibration Turning Tool with Coolant Hole-Super Toughness

Invention Patent 發明專利  
1698298

### Features 特色



01. The increasing rigidity on boring bar is by the tungsten steel, and the toughness of the body can reduce the accidental impact during turning, thereby protecting the boring bar.

藉由內含鎢鋼增加其桿體的桿性，而本體得的韌性可減緩車削時的意外衝擊，進而保護刀桿。

02. The cutter heads are high-pressure chip breaking coolant spray design, which is conducive to chip breaking.

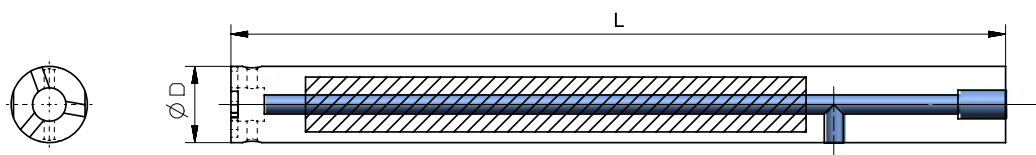
刀頭均採用符合高壓斷屑噴水設計，有利於排斷屑。

03. Patented side coolant inlet, the cutter holder does not need a back cover and does not need a coolant pipe. Not only can directly guide the coolant out of the center, but also can stretch to a limited length without cutting.

專利的側邊進水方式，刀座無需後蓋，無需接水管。不僅可直接導引中心出水，且可有限度伸縮長度，不需要裁切。

04. Because the boring bar will be reaction force by itself when the coolant is discharged under high pressure, the internal tungsten steel can increase stability and be accuracy easier on dimension.

因高壓出水時，桿體會產生字體的反作用力，內涵鎢鋼可增加其穩定性，較易於掌握尺寸精度。



Ratio	Order No.	ØD (mm)	L (mm)	可換式車刀頭 Removable Cutting Head	Screw	Wrench
4D	F-16-157	16	157	CP1-16-S/Y/P-Type	M4	2
	F-18-166	18	166	CP1-1-18-S/Y/P-Type		
	F-20-173	20	173	CP2-20-S/Y/P-Type		
	F-25-195	25	195	CP3-25-S/Y/P-Type	M6	3
	F-32-223	32	223	CP4-32-S/Y/P-Type		
	F-40-260	40	260	CP5-40-S/Y/P-Type		

Invention Patent 發明專利  
US8371776 / I419764

Material: SNCM439(Alloy Steel)  
材質: 藍十字合金鋼  
Hardness: HRC 42°  
硬度: HRC 42度

Material: SCM440(Alloy Steel)  
材質: 紅十字合金鋼  
Hardness: HRC 42°  
硬度: HRC 42度

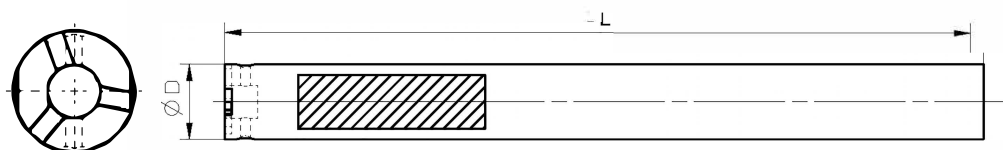


Damper system  
制震器

### Features 特色

01. Suitable for deep hole roughing.  
適合用於粗加工

02. Can interchange different cutting heads.  
可替換不同刀頭



Ratio	Order No.	ØD (mm)	L (mm)	可換式車刀頭 Removable Cutting Head	Screw 🔩	Wrench 🔑
5D	CP-16-157	16	157	CP1-16-STUPR/STUCR/SDUCR	M4	2
	CP-18-166	18	166	CP1-1-18-STUPR/STUCR/SDUCR		
	CP-20-173	20	173	CP2-20-STUPR/STUCR/SDUCR		
	CP-25-195	25	195	CP3-25-STUPR/STUCR/SDUCR	M6	3
	CP-32-223	32	223	CP4-32-STUPR/STUCR/SDUCR		
	CP-40-260	40	260	CP5-40-STUPR/STUCR/SDUCR		

提供訂製特殊柄徑及特殊長度刀桿 Customized tool diameter and length are available.



# CI 抗震車刀

## Removable Type CI Anti-Vibration Boring Bar

Invention Patent 發明專利  
I413557 / I419764

Material: SNCM439(Alloy Steel)  
材質: 藍十字合金鋼  
Hardness: HRC 42°  
硬度: HRC 42度

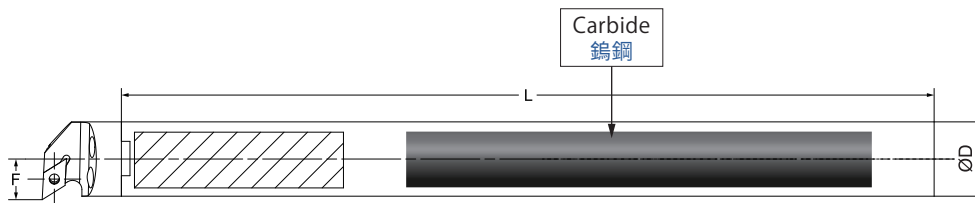
Damper system  
制震器



Material: SCM440(Alloy Steel)  
材質: 紅十字合金鋼  
Hardness: HRC 42°  
硬度: HRC 42度

### Features 特色

- 01. C I = Carbide Inside.  
內塞鎢鋼
- 02. Combining the advantages of Removable Type Anti-Vibration Boring Bar and TSC Removable Type Anti-Vibration Boring Bar.  
結合三叉式抗震車刀和TSC抗震車刀的優點
- 03. Good cutting performance, suitable for roughing and finishing.  
良好的切削能力，適用於粗車及精修
- 04. With coolant hole.  
有內冷水孔
- 05. Good stiffness of the tools and good precision in cutting size.  
刀桿剛性良好，尺寸的準確度佳
- 06. Increasing tool stiffness, reducing the risk of tool broken when machining.  
增加刀桿韌性，減少加工時斷刀的風險
- 07. Please work with anti-vibration cutting sleeve to have better anti-vibration effect.  
請搭配抗震刀套使用，可享受更好的抗震效果
- 08. Can interchange different cutting heads.  
可替換不同刀頭



Ratio	Order No.	ØD (mm)	L (mm)	懸身長度 Overhang(mm)	可換式車刀頭 Removable Cutting Head	Screw	Wrench
7D	M7D-20-235-CI-P	20	235	140	CP2-20-S-Type	M3	2.5
	M7D-25-275-CI-P	25	275	175	CP3-25-S/P-Type	M4	3
	M7D-32-325-CI-P	32	325	224	CP4-32-S/P-Type	M5	4
	M7D-40-385-CI-P	40	385	280	CP5-40-S/P-Type	M6	5
	M7D-50-450-CI-P	50	450	350			
10D	M10D-20-300-CI-P	20	300	200	CP2-20-S-Type	M3	2.5
	M10D-25-350-CI-P	25	350	250	CP3-25-S/P-Type	M4	3
	M10D-32-420-CI-P	32	420	320	CP4-32-S/P-Type	M5	4
	M10D-40-520-CI-P	40	520	400	CP5-40-S/P-Type	M6	5
	M10D-50-668-CI-P	50	668	500			

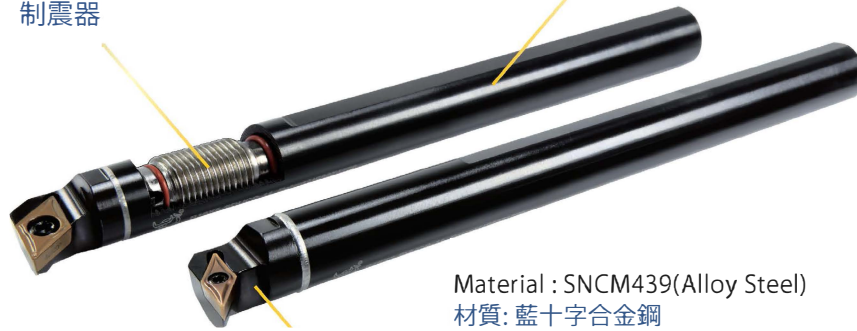
# 一體式抗震車刀-杓爪刀

## Chatter off type Anti-Vibration Cutter

Invention Patentt 發明專利  
US8371776 / I419764

Material : SCM440(Alloy Steel)  
材質: 紅十字合金鋼  
Hardness: HRC 42°  
硬度: HRC 42度

Damper system  
制震器

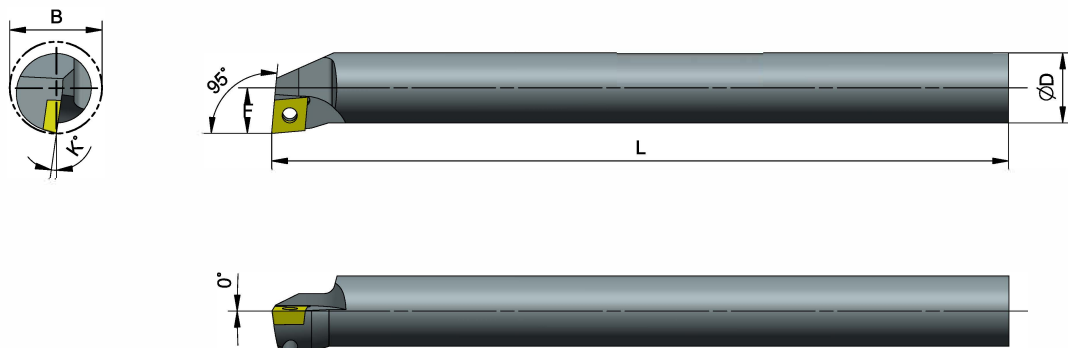


Material : SNCM439(Alloy Steel)  
材質: 藍十字合金鋼  
Hardness: HRC 42°  
硬度: HRC 42度

### Features 特色

1. High machining efficiency, less insert consumption.  
加工效率高, 減少刀片消耗
2. Machining with insert nose radius 0.4mm.  
使用刀片 R角 0.4mm 加工
3. Suitable for deep hole roughing.  
適合深孔粗車

### SCLC



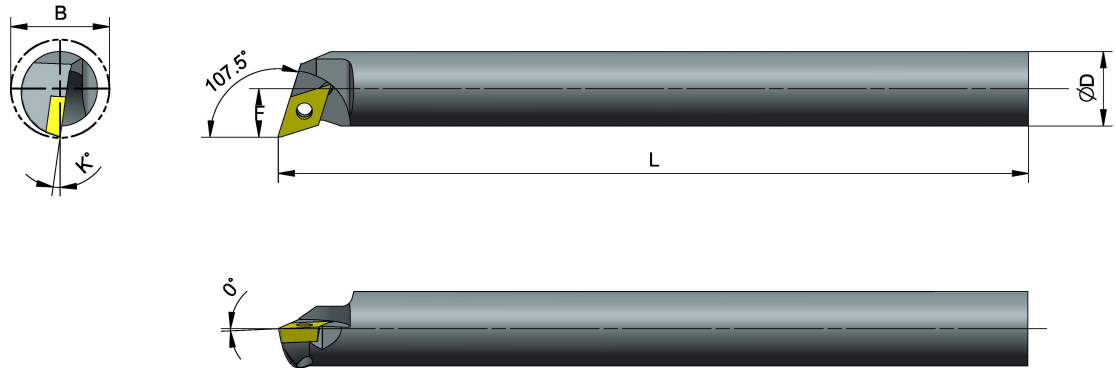
Ratio	Order No.	Insert	Dimensions (mm)					Screw	Wrench
	Right / Left		D	F	K	L	B		
5D	B10X5-SCLCR/L-06	CCMT060204	10	7	12	150	13	M2.5	T8
	B10X5-SCLCR/L-06-12		10	6	12	150	12		
5-6D	B12X5-SCLCR/L-06		12	7	9	150	14		
	B14X5-SCLCR/L-06		14	9	8	180	17		
	B14X5-SCLCR/L-09		14	9	11	180	17		

提供訂製特殊柄徑及特殊長度刀桿 Customized tool diameter and length are available.

# 一體式抗震車刀-杓爪刀

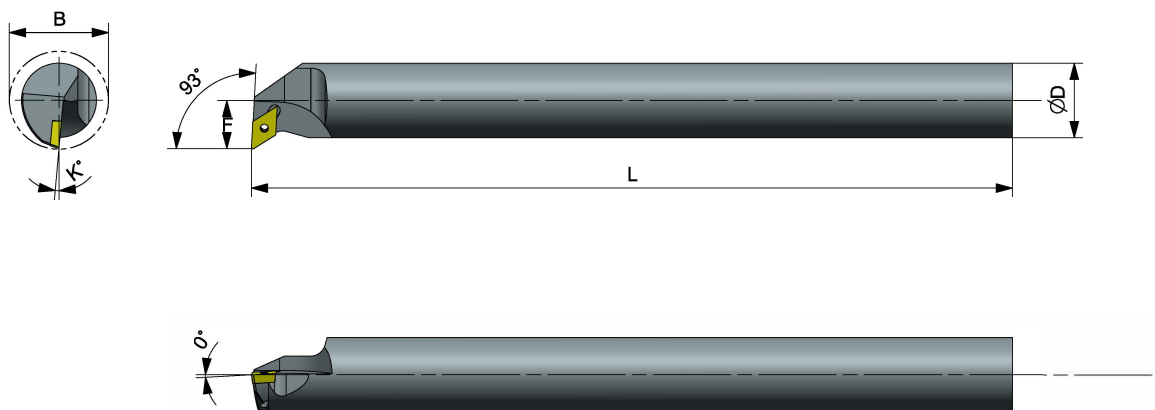
## Chatter off type Anti-Vibration Cutter

### SDQC



Ratio	Order No.	Insert	Dimensions (mm)					Screw	Wrench
	Right / Left		D	F	K	L	B		
5D	B10X5-SDQCR/L-07	DCMT070204	10	7	10	150	13	M2.5	T8
5-6D	B12X5-SDQCR/L-07		12	9	8	150	16		
	B14X5-SDQCR/L-07		14	9	8	180	17		

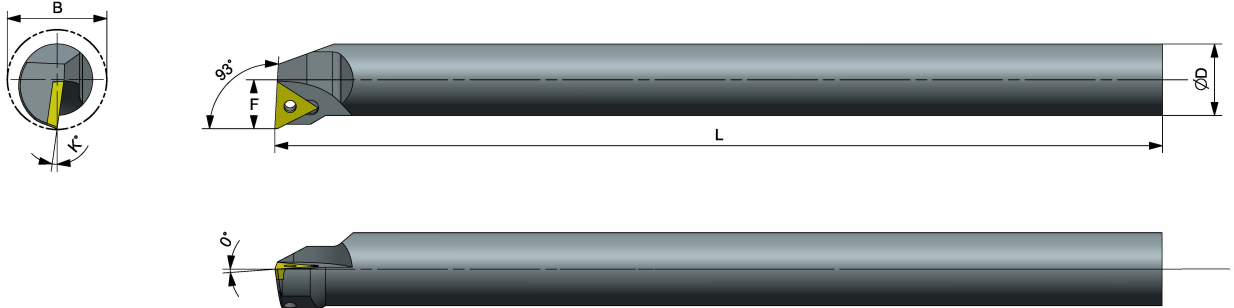
### SDUC



Ratio	Order No.	Insert	Dimensions (mm)					Screw	Wrench
	Right / Left		D	F	K	L	B		
5D	B10X5-SDUCR/L-07	DCMT070204	10	7	10	150	13	M2.5	T8
5-6D	B12X5-SDUCR/L-07		12	9	8	150	16		
	B14X5-SDUCR/L-07		14	9	8	180	17		

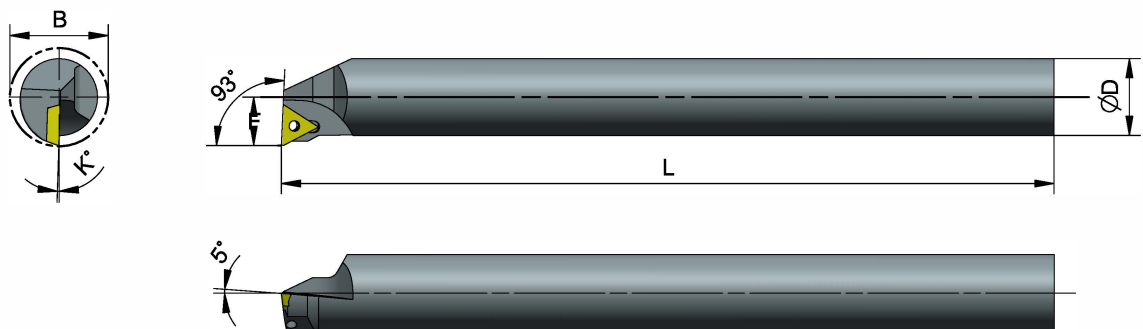
# 一體式抗震車刀-杓爪刀 Chatter off type Anti-Vibration Cutter

## STUC



Ratio	Order No.	Insert	Dimensions (mm)					Screw	Wrench
	Right / Left		D	F	K	L	B		
5D	B10X5-STUCR/L-09	TCMT090204	10	6	12	150	12	M2.5	T8
	B10X5-STUCR/L-11		10	6	12	150	12		
5-6D	B12X5-STUCR/L-11	TCMT110204	12	7	10	150	14		
	B14X5-STUCR/L-11		14	8	8	180	16		

## STUP



Ratio	Order No.	Insert	Dimensions (mm)					Screw	Wrench
	Right / Left		D	F	K	L	B		
5D	B10X5-STUPR/L-11	TPMT110304	10	7	8	150	13	M3	T10
5-6D	B12X5-STUPR/L-11		12	8	6	150	15		
	B14X5-STUPR/L-11		14	8.5	8	180	17		

提供訂製特殊柄徑及特殊長度刀桿 Customized tool diameter and length are available.

# M3S 抗震車刀

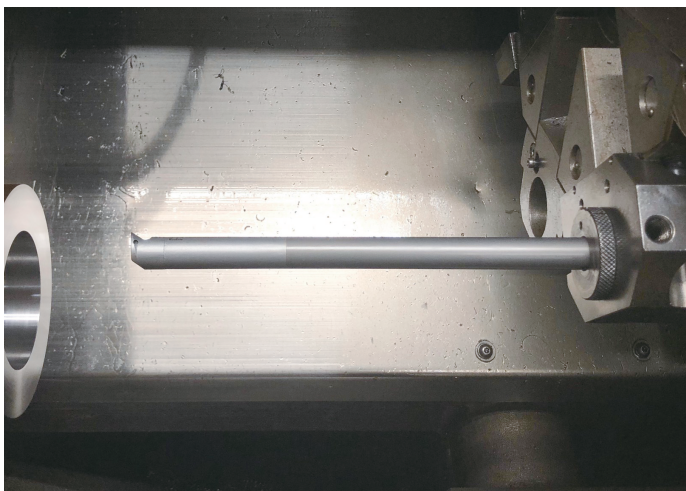
## M3S Anti-Vibration Boring Bar

Invention Patentt 發明專利  
I413557 / I419764



### Features 特色

- 01 Suitable for deep hole finishing.  
適合深孔精修
- 02 High machining efficiency, less insert consumption.  
加工效率高, 減少刀片消耗
- 03 Good stiffness of the tools and good precision in cutting size.  
刀桿剛性良好, 尺寸的準確度佳
- 04 Please work with anti-vibration cutting sleeve to have better anti-vibration effect.  
請搭配抗震刀套使用, 可享受更好的抗震效果



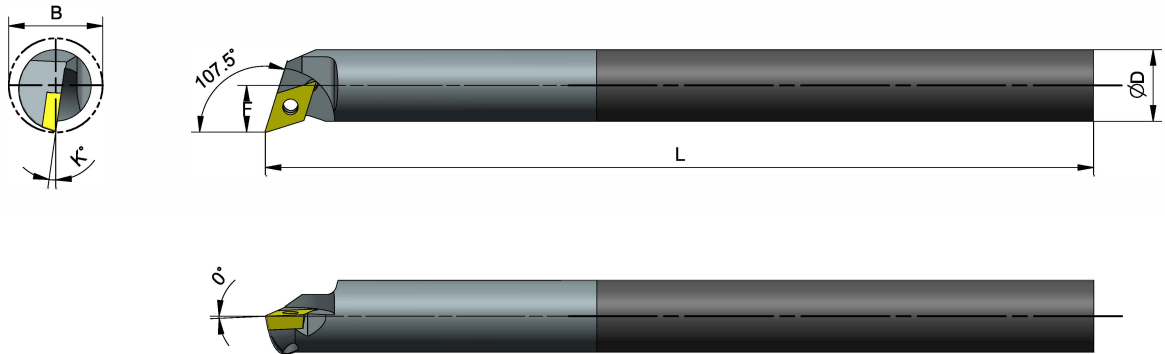
Type: M3S16X-SDUCR-07  
Insert: DCMT070204  
Overhang: 224 mm (14D)

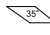

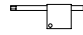
Roughing / 粗車: Finishing / 精車:  
Ap: 0.2mm / rev Ap: 0.05mm / rev  
F: 0.2mm F: 0.12mm  
Vc: 80m / min Vc: 100m / min

# M3S 抗震車刀

## M3S Anti-Vibration Boring Bar

■ SDQC



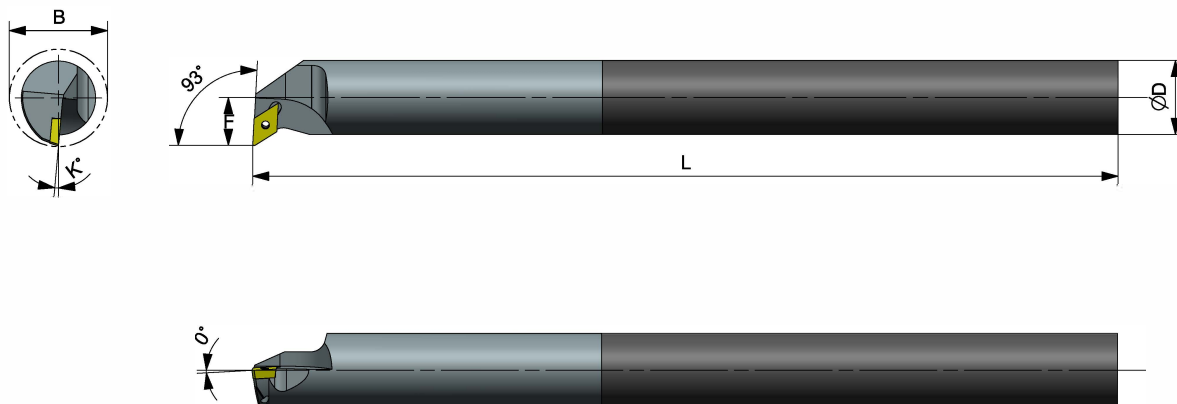
Ratio	Order No.	Insert	Dimensions (mm)					Screw	Wrench
	Right / Left		D	F	K	L	B		
6D	M3S8K-SDQCR-07	DCMT070204	10	7	10	125	13	M2.5	T8
	M3S10M-SDQCR-07		10	7	10	150	13		
	M3S12M-SDQCR-07		12	9	8	150	16		
	M3S14Q-SDQCR-07		14	9	8	180	17		
8D	M3S10Q-SDQCR-07	DCMT070204	10	7	10	180	13	M2.5	T8
	M3S12Q-SDQCR-07		12	9	8	180	16		
	M3S14R-SDQCR-07		14	9	8	200	17		
10D	M3S10Q-SDQCR-07	DCMT070204	10	7	10	180	13	M2.5	T8
	M3S12X-SDQCR-07		12	9	8	210	16		
	M3S14X-SDQCR-07		14	9	8	240	17		
12D	M3S14X-SDQCR-07	DCMT070204	14	9	8	270	17	M2.5	T8
14D	M3S14T-SDQCR-07	DCMT070204	14	9	8	270	17	M2.5	T8

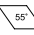

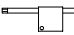
提供訂製特殊柄徑及特殊長度刀桿 Customized tool diameter and length are available.

# M3S 抗震車刀

## M3S Anti-Vibration Boring Bar

### SDUC

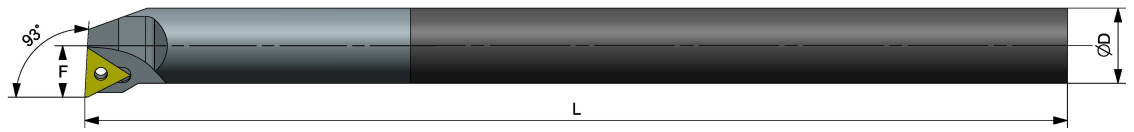
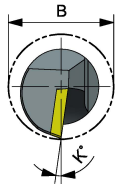


Ratio	Order No.	Insert	Dimensions (mm)					Screw	Wrench
	Right / Left		D	F	K	L	B		
6D	M3S8K-SDUCR-07	DCMT070204	10	7	10	125	13	M2.5	T8
	M3S10M-SDUCR-07		10	7	10	150	13		
	M3S12M-SDUCR-07		12	9	8	150	16		
	M3S14Q-SDUCR-07		14	9	8	180	17		
8D	M3S10Q-SDUCR-07	DCMT070204	10	7	10	180	13	M2.5	T8
	M3S12Q-SDUCR-07		12	9	8	180	16		
	M3S14R-SDUCR-07		14	9	8	200	17		
10D	M3S10Q-SDUCR-07	DCMT070204	10	7	10	180	13	M2.5	T8
	M3S12X-SDUCR-07		12	9	8	210	16		
	M3S14X-SDUCR-07		14	9	8	240	17		
12D	M3S14X-SDUCR-07	DCMT070202	14	9	8	270	17	M2.5	T8
14D	M3S14T-SDUCR-07	DCMT070202	14	9	8	270	17	M2.5	T8

# M3S 抗震車刀

## M3S Anti-Vibration Boring Bar

STUC



Ratio	Order No.	Insert	Dimensions (mm)					Screw	Wrench
	Right / Left		D	F	K	L	B		
6D	M3S8K-STUCR-08	TCMT080204	8	5	10	125	10	M2.5	T8
	M3S10M-STUCR-11	TCMT110204	10	6	12	150	12		
	M3S12M-STUCR-11		12	7	10	150	14		
	M3S14Q-STUCR-11		14	8	8	180	16		
M3S10Q-STUCR-11	10		6	12	180	12			
M3S12Q-STUCR-11	12		7	10	180	14			
M3S14R-STUCR-11	14		8	8	200	16			
10D	M3S10R-STUCR-11	TCMT110204	10	6	12	200	12	M2.5	T8
	M3S12X-STUCR-11		12	7	10	210	14		
	M3S14X-STUCR-11		14	8	8	240	16		
12D	M3S14X-STUCR-11		14	8	8	270	16		
14D	M3S14T-STUCR-11	TCMT110204	14	8	8	300	16		

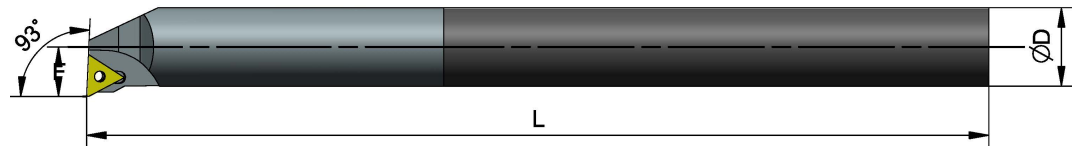
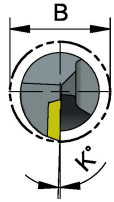
提供訂製特殊柄徑及特殊長度刀桿 Customized tool diameter and length are available.



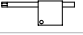


# M3S 抗震車刀

## M3S Anti-Vibration Boring Bar

### STUP



Ratio	Order No.	Insert	Dimensions (mm)					Screw	Wrench
	Right / Left		D	F	K	L	B		
6D	M3S8K-STUPR-08	TPMT080204	8	5	10	125	10	M2.5	T8
	M3S10M-STUPR-11	TPMT110304	10	7	8	150	13	M3	T10
	M3S12M-STUPR-11		12	8	6	150	15		
	M3S14Q-STUPR-11		14	8.5	8	180	17		
M3S10Q-STUPR-11	10		7	8	180	13			
8D	M3S12Q-STUPR-11	TPMT110304	12	8	6	180	15	M3	T10
	M3S14R-STUPR-11		14	8.5	8	200	17		
	M3S10R-STUPR-11		10	7	8	200	13		
10D	M3S12X-STUPR-11	TPMT110304	12	8	6	210	15	M3	T10
	M3S14X-STUPR-11		14	8.5	8	240	17		
	M3S10X-STUPR-11		10	7	8	200	13		
12D	M3S14X-STUPR-11	TPMT110302	14	8.5	8	270	17	M3	T10
14D	M3S14T-STUPR-11	TPMT110304	14	8.5	8	300	17		

## MR3S 抗震車刀 MR3S Anti-Vibration Boring Bar



Ratio	Order No.	ØD (mm)	L (mm)	懸身長度 Overhang(mm)	可換式車刀頭 Removable Cutting Head	Screw 🔩	Wrench 🔑
6D	MR3S16-159	16	159	96	CP1-16-S-Type	M4	2
	MR3S18-178	18	178	108	CP1-1-18-S-Type	M4	2
8D	MR3S16-199	16	199	128	CP1-16-S-Type	M4	2
	MR3S18-218	18	218	144	CP1-1-18-S-Type	M4	2
10D	MR3S16-229	16	229	160	CP1-16-S-Type	M4	2
	MR3S18-258	18	258	180	CP1-1-18-S-Type	M4	2
12D	MR3S16-269	16	269	192	CP1-16-S-Type	M4	2
	MR3S18-298	18	298	216	CP1-1-18-S-Type	M4	2
14D	MR3S16-309	16	309	224	CP1-16-S-Type	M4	2
	MR3S18-328	18	328	252	CP1-1-18-S-Type	M4	2

提供訂製特殊柄徑及特殊長度刀桿 Customized tool diameter and length are available.

# 三叉式組合抗震車刀桿

## Removable Type Anti-Vibration Boring Bar

Invention Patent 發明專利  
US8371776 / I419764

Damper system  
制震器

Material: SNCM439  
(Alloy Steel)

材質: 藍十字合金鋼  
Hardness: HRC 42°  
硬度: HRC 42度

Material: SCM440(Alloy Steel)

材質: 紅十字合金鋼  
Hardness: HRC 42°  
硬度: HRC 42度

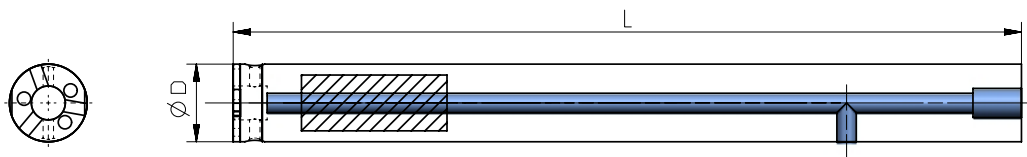


### Features 特色

01. Suitable for deep hole roughing.  
適合用於粗加工

02. With coolant hole.  
有內冷水孔

03. Can interchange different cutting heads.  
可替換不同刀頭



Ratio	Order No.	ØD (mm)	L (mm)	懸身長度 Overhang(mm)	可換式車刀頭 Removable Cutting Head	Screw	Wrench			
6D	M6D-16-157P	16	157	96	CP1-16-S-Type	M3	1.5			
	M6D-18-166P	18	166	108	CP1-1-18-S-Type	M3	1.5			
	M6D-20-200P	20	200	120	CP2-20-S-Type	M3	1.5			
	M6D-25-250P	25	250	150	CP3-25-S-Type	M4	1.5			
	M6D-32-300P	32	300	192	CP4-32-S/P-Type	M5	1.5			
	M6D-40-350P	40	350	240	CP5-40-S/P-Type	M6	5			
	M6D-50-400P	50	400	300						
8D	M8D-60-450P	60	450	360	CP5-40-S/P-Type	M6	5			
	M8D-32-350P	32	350	256				CP4-32-S/P-Type	M5	4
	M8D-40-420P	40	420	320				CP5-40-S/P-Type	M6	5
	M8D-50-510P	50	510	400						
10D	M8D-60-620P	60	620	480	CP5-40-S/P-Type	M6	5			
	M10D-40-530P	40	530	400						
	M10D-50-668P	50	668	500						
	M10D-60-808P	60	808	600						

Invention Patent 發明專利  
I413557 /I419764



### Features 特色

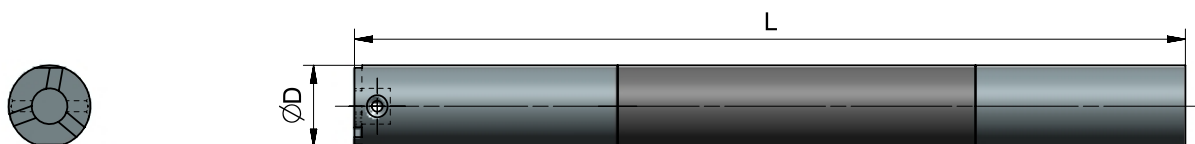
01. Suitable for deep hole finishing.  
適合用於精加工
02. With coolant hole, can interchange different cutting heads.  
有內冷水孔，可替換不同刀頭
03. Middle section is carbide, which can increase the rigidity of boring bar and make it more stable when machining.  
中段採鎢鋼熔合，增加其剛性，使加工尺寸更穩定
04. Please work with anti-vibration cutting sleeve to have better anti-vibration effect.  
請搭配抗震刀套使用，可享受更好的抗震效果

提供訂製特殊柄徑及特殊長度刀桿 Customized tool diameter and length are available.

# TSC抗震車刀

## TSC Removable Type Anti-Vibration Boring Bar

Invention Patent 發明專利  
I413557 /I419764



Ratio	Order No.	ØD (mm)	L (mm)	懸身長度 Overhang(mm)	可換式車刀頭 Removable Cutting Head	Screw ⌀	Wrench ↷
6D	TSC-16-159P	16	159	96	CP1-16-S/P-Type	M3	2.5
	TSC-18-178P	18	178	108	CP1-1-18-S/P-Type	M4	3
	TSC-20-200P	20	200	120	CP2-20-S-Type	M3	2.5
	TSC-25-250P	25	250	150	CP3-25-S/P-Type	M4	3
	TSC-32-300P	32	300	192	CP4-32-S/P-Type	M5	4
8D	TSC-16-199P	16	199	128	CP1-16-S-Type	M3	2.5
	TSC-18-218P	18	218	144	CP1-1-18-S-Type	M4	3
	TSC-20-250P	20	250	160	CP2-20-S-Type	M3	2.5
	TSC-25-300P	25	300	200	CP3-25-S-Type	M4	3
	TSC-32-350P	32	350	256	CP4-32-S/P-Type	M5	4
10D	TSC-16-229P	16	229	160	CP1-16-S-Type	M3	2.5
	TSC-18-258P	18	258	180	CP1-1-18-S-Type	M4	3
	TSC-20-300P	20	300	200	CP2-20-S/P-Type	M5	4
	TSC-25-350P	25	350	320	CP4-32-S/P-Type	M5	4
	TSC-32-420P	32	420	400	CP5-40-S/P-Type	M6	5
	TSC-40-520	40	520	320	CP4-32-S/P-Type	M5	4
12D	TSC-16-269P	16	269	240	CP3-16-S-Type	M3	2.5
	TSC-18-298P	18	298	300	CP3-18-S-Type	M4	3
	TSC-20-340P	20	340	240	CP2-20-S-Type	M3	2.5
	TSC-25-400P	25	400	300	CP3-25-S-Type	M4	3
	TSC-32-480P	32	480	384	CP4-32-S-Type	M5	4
	TSC-40-580P	40	580	480	CP5-40-S-Type	M6	5
14D	TSC-16-309P	16	309	280	CP2-20-S-Type	M3	2.5
	TSC-18-328P	18	328	350	CP3-25-S-Type	M4	3
	TSC-20-380P	20	380	280	CP2-20-S-Type	M3	2.5
	TSC-25-450P	25	450	350	CP3-25-S-Type	M4	3
	TSC-32-560P	32	560	448	CP4-32-S-Type	M5	4
	TSC-40-660P	40	660	560	CP5-40-S-Type	M6	5

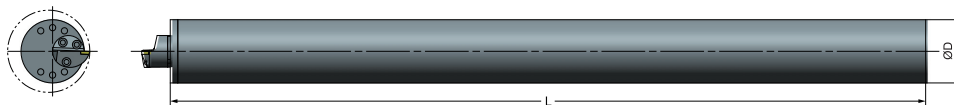
# 巨型抗震車刀 Giant Anti-Vibration Boring Bar

Invention Patent 發明專利  
US8371776



## Features 特色

- 01 Can interchange different cutting heads.  
可替換不同刀頭
- 02 Optimizing the workpiece surface.  
優化工件表面粗糙度
- 03 Machining inner and outer surface with adapter for replacement.  
內、外徑加工以轉接頭更替
- 04 The boring bar has damper system inside, which can increase the stability of the bar and work efficiency.  
刀桿內含制震器，增加平穩度與工作效率



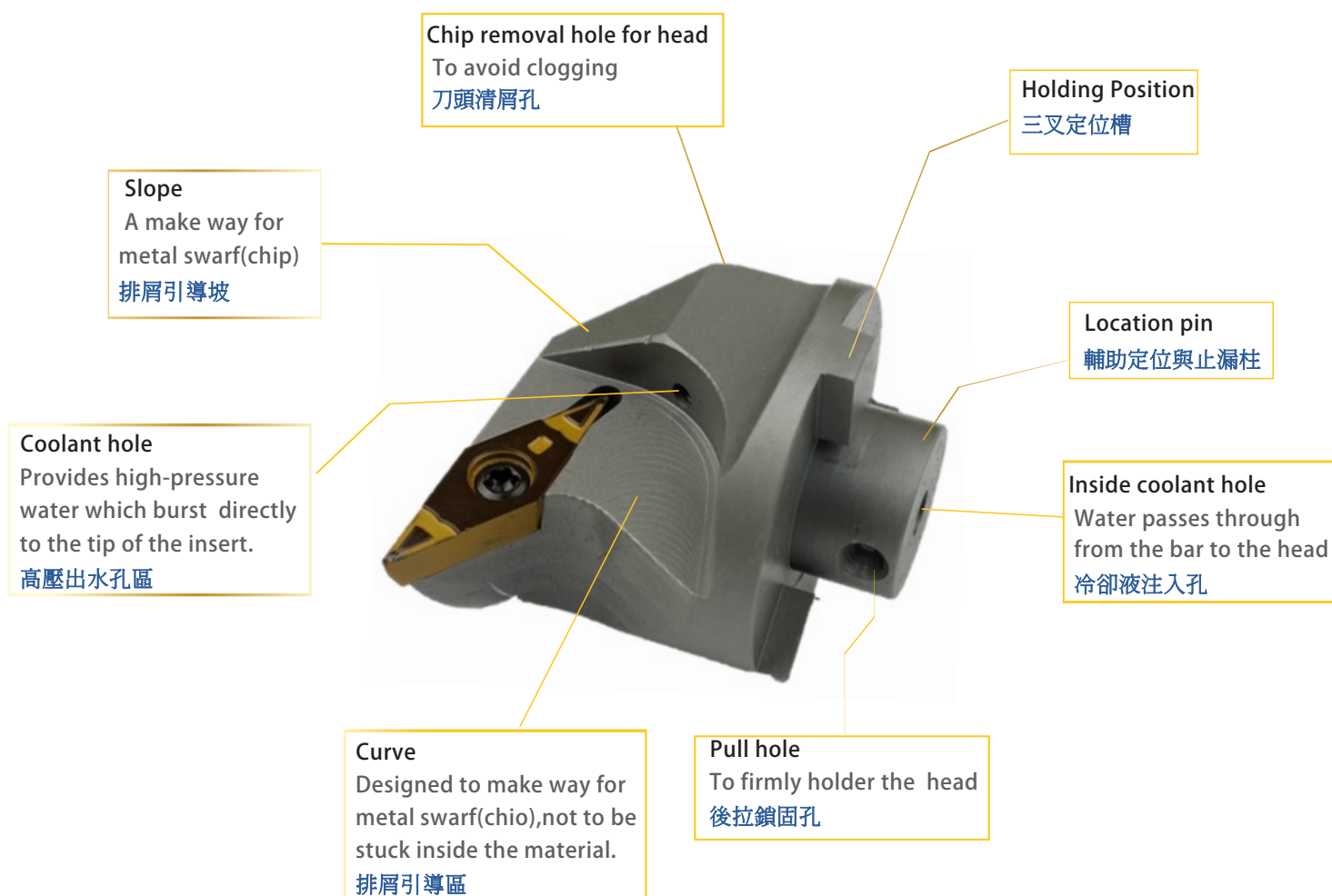
Ratio	Order No.	ØD (mm)	L (mm)	懸身長度 Overhang(mm)	可換式車刀頭 Removable Cutting Head	Screw I	Wrench ↷
7D	M7D-80-900P	80	900	560	CP5-40-S/P-Type	M6	5
	M7D-100-1200P	100	1200	700			
	M7D-120-1500P	120	1500	840			
	M7D-150-1900P	150	1900	1050			
	M7D-200-2400P	200	2400	1400			
	M7D-250-3200P	250	3200	1750			
10D	M10D-80-1200P	80	1200	800			
	M10D-100-1500P	100	1500	1000			
	M10D-120-1900P	120	1900	1200			
	M10D-150-2400P	150	2400	1500			
	M10D-180-2800P	180	2800	1800			
	M10D-200-3200P	200	3200	2000			
	M10D-250-4000P	250	4000	2500			

提供訂製特殊柄徑及特殊長度刀桿 Customized tool diameter and length are available.

# 可換式車刀頭

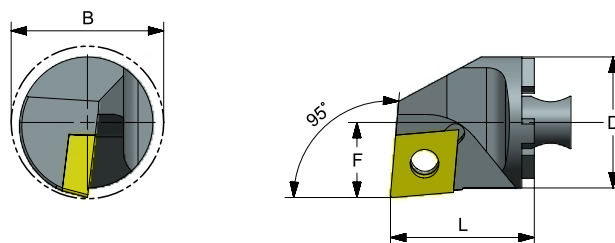
## Removable Cutting Head

Type 刀型	Shim 墊片	Advantage 優點	Machining 加工	Disadvantage 缺點
S-Type	No	Less cutting resistance 切削阻力小	Profile turning, reducing interference 仿型加工、減少干涉	High insert price 刀片價格高
Y-Type	Yes	Suitable for heavy cutting, reset accurately, good chip breaking effect with high pressure equipment 適合重切削, 重複定位準確 使用高壓設備斷屑效果良好	Interrupted cutting 斷續車削	Poor chip removal 排屑較不好
P-Type	No	Good chip removal 排屑良好	Continuous cutting 連續車削	Large interrupted cutting may cause insert displacement 大斷續切削恐有刀片位移之虞



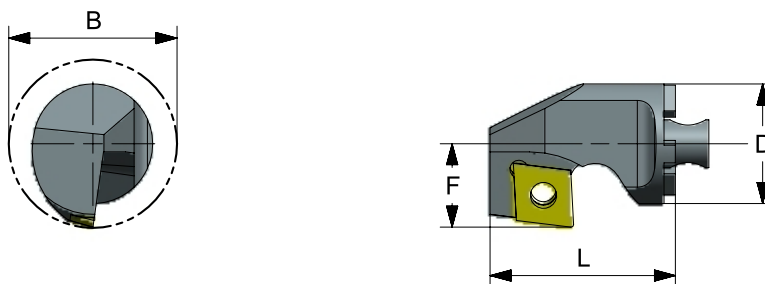
## 可換式車刀頭 Removable Cutting Head

### SCLC



Order No.	Insert	Dimensions (mm)					Screw	Wrench
		D	F	K	L	B		
Right		D	F	K	L	B		
CP1-16-SCLCR/L-09	CCMT09T304	16	11	9	21	20	M4	T15
CP1-1-18-SCLCR/L-09		18	12	8	22	22		
CP2-20-SCLCR/L-09		20	13	8	25	24		
CP3-25-SCLCR/L-09		25	17	8	28	31		
CP4-32-SCLCR/L-09		32	22	6	35	39		
CP3-25-SCLCR/L-12	CCMT120404	25	17	8	28	31	M5	T20
CP4-32-SCLCR/L-12		32	22	6	35	39		
CP5-40-SCLCR/L-12		40	27	4	38	48		

### SCZC



Order No.	Insert	Dimensions (mm)					Screw	Wrench
		D	F	K	L	B		
Right		D	F	K	L	B		
CP1-16-SCZCR/L-06	CCMT060204	16	11.5	8	21	21	M2.5	T8
CP1-1-18-SCZCR/L-06		18	12.5	8	22	23		
CP2-20-SCZCR/L-09	CCMT09T304	20	14.5	8	25	25	M4	T15
CP3-25-SCZCR/L-09		25	17	6	28	31		
CP3-25-SCZCR/L-12	CCMT120404	25	17	8	28	31	M5	T20
CP4-32-SCZCR/L-12		32	21	6	35	38		
CP5-40-SCZCR/L-12		40	25	4	38	47		

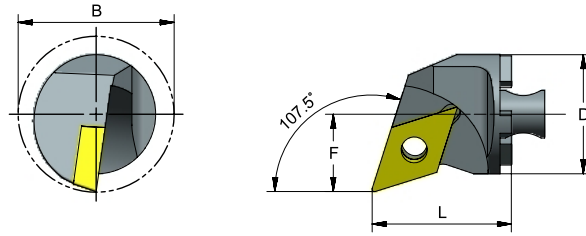
提供訂製特殊柄徑及特殊長度刀桿 Customized tool diameter and length are available.



# 可換式車刀頭

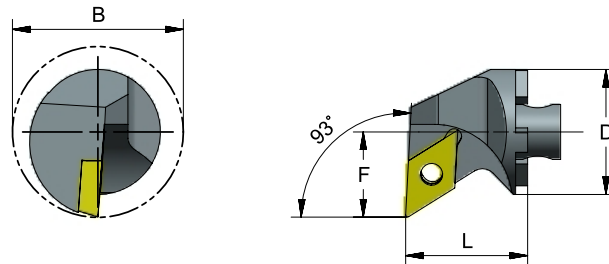
## Removable Cutting Head

### SDQC



Order No.	Insert	Dimensions (mm)					Screw	Wrench
		D	F	K	L	B		
Right		D	F	K	L	B		
CP1-16-SDQCR/L-07	DCMT070204	16	11	7	21	20	M2.5	T8
CP1-1-18-SDQCR/L-07		18	12	7	22	22		
CP2-20-SDQCR/L-07		20	13	6	25	24		
CP2-20-SDQCR/L-11	DCMT11T304	20	13	6	25	24	M4	T15
CP3-25-SDQCR/L-11		25	17	4	28	31		
CP4-32-SDQCR/L-11		32	22	4	35	37		
CP5-40-SDQCR/L-11		40	27	2	38	48		

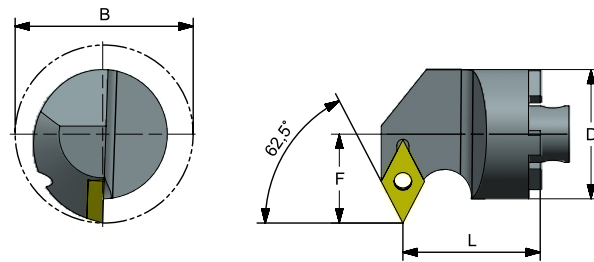
### SDUC



Order No.	Insert	Dimensions (mm)					Screw	Wrench
		D	F	K	L	B		
Right		D	F	K	L	B		
CP1-16-SDUCR/L-07	DCMT070204	16	11	7	21	20	M2.5	T8
CP1-1-18-SDUCR/L-07		18	12	7	22	22		
CP2-20-SDUCR/L-07		20	13	6	25	24		
CP2-20-SDUCR/L-11	DCMT11T304	20	13	8	25	24	M4	T15
CP3-25-SDUCR/L-11		25	17	4	28	31		
CP4-32-SDUCR/L-11		32	22	4	35	39		
CP5-40-SDUCR/L-11		40	27	2	38	48		

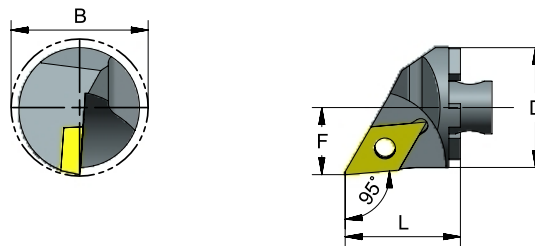
## 可換式車刀頭 Removable Cutting Head

### SDWC



Order No.	Insert	Dimensions (mm)					Screw	Wrench
Right		D	F	K	L	B		
CP1-16-SDWCR/L-11	DCMT11T304	16	11	8	21	20	M4	T15
CP1-1-18-SDWCR/L-11		18	12	8	22	21		
CP2-20-SDWCR/L-11		20	14.5	8	25	26		
CP3-25-SDWCR/L-11		25	18	6	28	32		
CP4-32-SDWCR/L-11		32	22	4	35	39		
CP5-40-SDWCR/L-11		40	27	2	38	48		

### SDXC



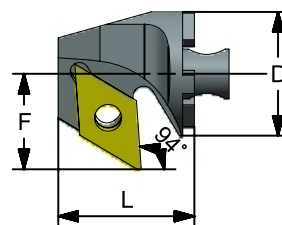
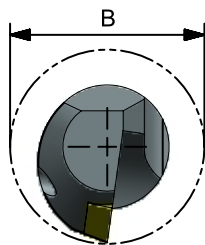
Order No.	Insert	Dimensions (mm)					Screw	Wrench
Right		D	F	K	L	B		
CP1-16-SDXCR/L-07	DCMT070204	16	9	6	21	19	M2.5	T8
CP1-1-18-SDXCR/L-07		18	10	6	22	20		
CP2-20-SDXCR/L-07		20	11.5	6	25	24		
CP3-25-SDXCR/L-11	DCMT11T304	25	14	4	28	28	M4	T15
CP4-32-SDXCR/L-11		32	18	4	35	36		
CP5-40-SDXCR/L-11		40	22	2	38	44		

提供訂製特殊車刀頭 Customized removable cutting head is available.

# 可換式車刀頭

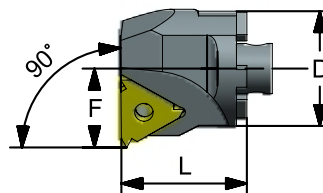
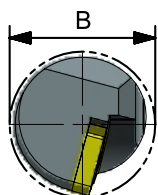
## Removable Cutting Head

### SDZC



Order No.	Insert	Dimensions (mm)					Screw	Wrench
Right		D	F	K	L	B		
CP1-16-SDZCR/L-11	DCMT11T304	16	12.5	8	21	22	M4	T15
CP1-1-18-SDZCR/L-11		18	14	8	22	24		
CP2-20-SDZCR/L-11		20	15.5	6	25	27		
CP3-25-SDZCR/L-11		25	18	6	28	32		
CP4-32-SDZCR/L-11		32	22	4	35	39		
CP5-40-SDZCR/L-11		40	27	4	38	48		

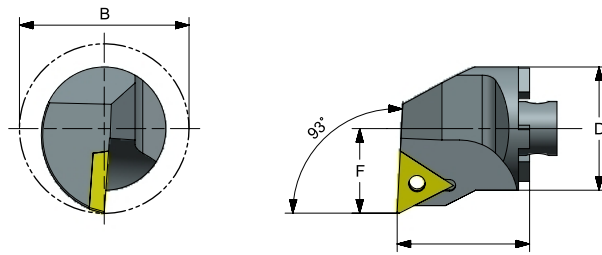
### SIR



Order No.	Insert	Dimensions (mm)					Screw	Wrench
Right		D	F	K	L	B		
CP1-16-SIR/L-16	IR16	16	10.5	17	21	20	M3.5	T10
CP1-1-18-SIR/L-16		18	12	17	22	23		
CP2-20-SIR/L-16		20	13.7	21	25	25		
CP3-25-SIR/L-16		25	16.2	21	28	31		
CP4-32-SIR/L-16		32	19.7	15	35	38		
CP5-40-SIR/L-16		40	25.7	15	38	48		
CP3-25-SIR/L-22	IR22	25	18.1	21	28	33	M4.5	T15
CP4-32-SIR/L-22		32	21.6	15	35	40		
CP5-40-SIR/L-22		40	25.7	15	38	48		

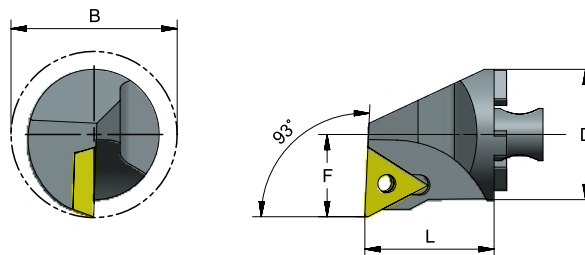
# 可換式車刀頭 Removable Cutting Head

## STUC



Order No.	Insert	Dimensions (mm)					Screw	Wrench
		D	F	K	L	B		
Right		D	F	K	L	B		
CP1-16-STUCR/L-11	TCMT110204	16	9	8	21	18	M2.5	T8
CP1-1-18-STUCR/L-11		18	10	8	22	20		
CP2-20-STUCR/L-11		20	11.5	6	25	27.5		
CP3-25-STUCR/L-11		25	14	4	28	27.5		
CP2-20-STUCR/L-16	TCMT16T304	20	13	8	25	23	M4	T15
CP3-25-STUCR/L-16		25	17	6	28	31		
CP4-32-STUCR/L-16		32	22	4	35	39		
CP5-40-STUCR/L-16		40	27	0	38	48		

## STUP



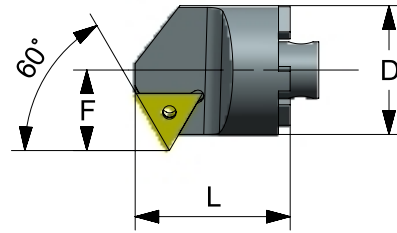
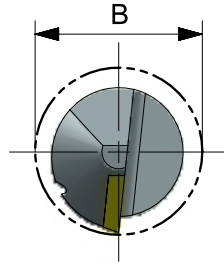
Order No.	Insert	Dimensions (mm)					Screw	Wrench
		D	F	K	L	B		
Right		D	F	K	L	B		
CP1-16-STUPR/L-11	TPMT110304	16	11	6	21	20	M3	T10
CP1/1-18-STUPR/L-11		18	12	6	22	22		
CP2-20-STUPR/L-11		20	13	2	25	24		
CP3-25-STUPR/L-11		25	17	8	28	31		
CP4-32-STUPR/L-11		32	22	6	35	39		
CP2-20-STUPR/L-16	TPMT1603/0404	20	13	8	25	24	M4	T15
CP3-25-STUPR/L-16		25	14.5	8	28	28		
CP4-32-STUPR/L-16		32	22	6	35	39		
CP5-40-STUPR/L-16		40	27	6	38	48		

提供訂製特殊車刀頭 Customized removable cutting head is available.

# 可換式車刀頭

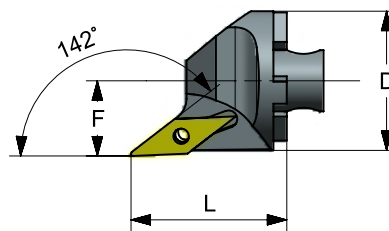
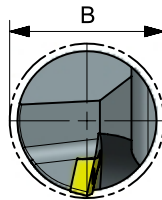
## Removable Cutting Head

### STWC



Order No.	Insert	Dimensions (mm)					Screw	Wrench
		D	F	K	L	B		
Right		D	F	K	L	B		
CP1-16-STWCR/L-11	TCMT110204	16	11	6	21	20	M2.5	T15
CP1-1-18-STWCR/L-11		18	12	6	22	22		
CP2-20-STWCR/L-11		20	16	4	25	25		
CP3-25-STWCR/L-11		25	20	2	28	31		
CP4-32-STWCR/L-11		32	19	0	35	39		
CP2-20-STWCR/L-16	TCMT16T304	20	14.5	8	25	25	M4	T15
CP3-25-STWCR/L-16		25	17	6	28	32		
CP4-32-STWCR/L-16		32	20	4	35	39		
CP5-40-STWCR/L-16		40	24	0	38	46		

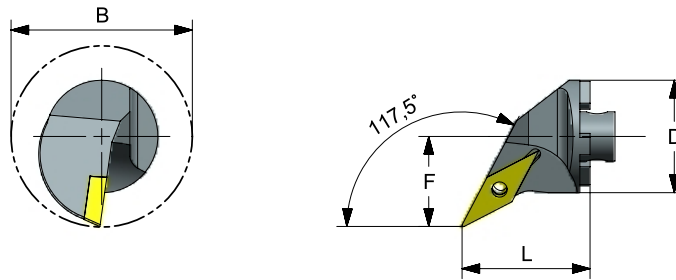
### SVJCR



Order No.	Insert	Dimensions (mm)					Screw	Wrench
		D	F	K	L	B		
Right		D	F	K	L	B		
CP1-16-SVJCR/L-11	VCMT110304	16	9	8	21	18	M2.5	T8
CP1-1-18-SVJCR/L-11		18	10	8	22	20		
CP2-20-SVJCR/L-11		20	11.5	6	25	23		
CP3-25-SVJCR/L-11		25	13.5	6	28	27		
CP4-32-SVJCR/L-11		32	18	6	35	35		
CP5-40-SVJCR/L-16	VCMT160404	40	22	4	38	43	M4	T15

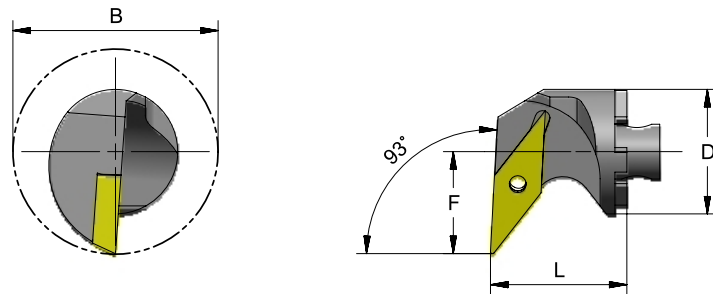
## 可換式車刀頭 Removable Cutting Head

### SVQC



Order No.	Insert	Dimensions (mm)					Screw	Wrench
Right		D	F	K	L	B		
CP1-16-SVQCR/L-11	VCMT110304	16	11.5	10	21	21	M2.5	T8
CP1-1-18-SVQCR/L-11		18	12.5	10	22	23		
CP2-20-SVQCR/L-11		20	13	8	25	24		
CP3-25-SVQCR/L-16	VCMT160304	25	16.5	4	28	31	M4	T15
CP4-32-SVQCR/L-16		32	22.5	8	35	39		
CP5-40-SVQCR/L-16		40	27	6	38	48		

### SVUC



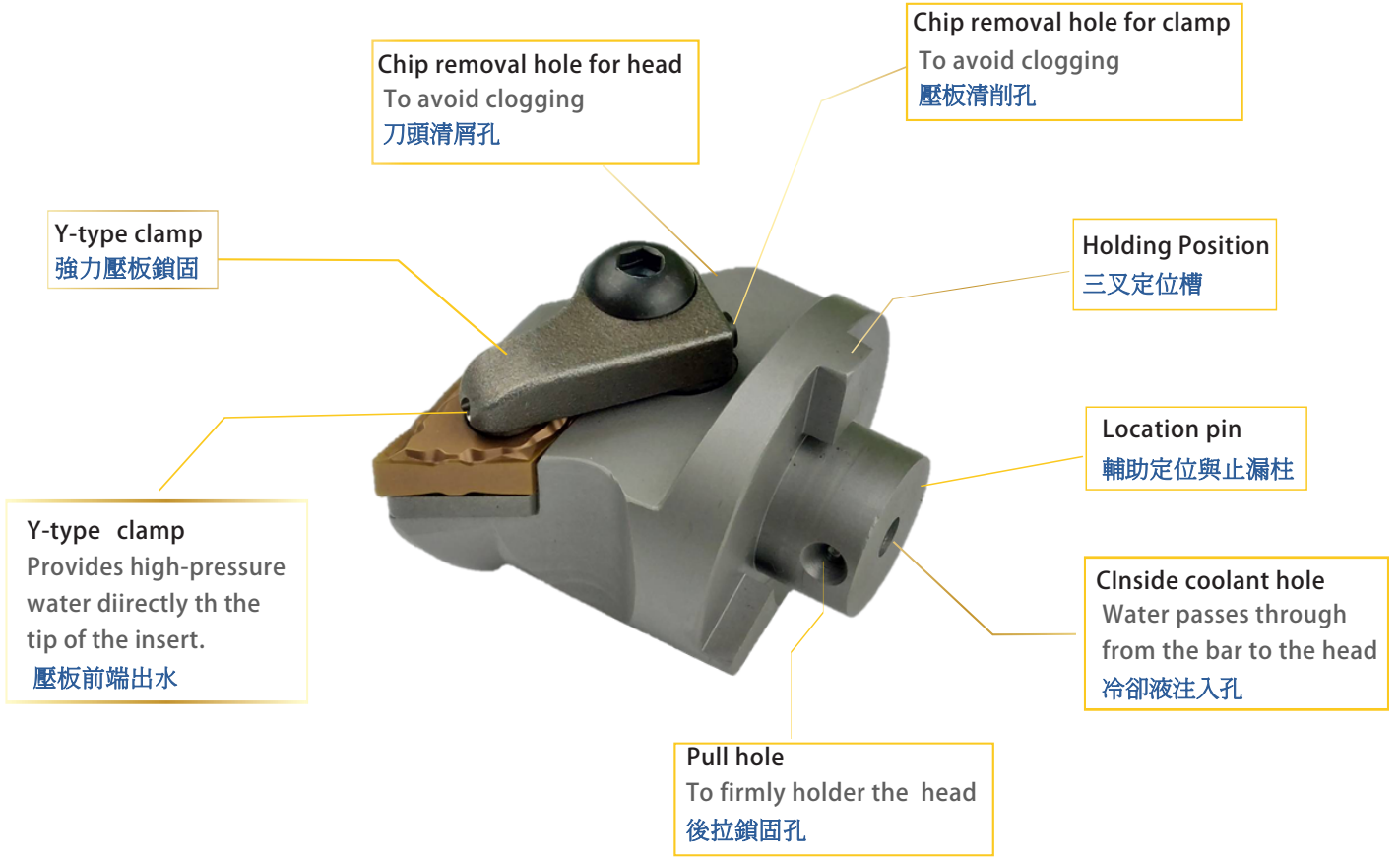
Order No.	Insert	Dimensions (mm)					Screw	Wrench
Right		D	F	K	L	B		
CP1-16-SVUCR/L-11	VCMT110304	16	13	8	21	21	M2.5	T8
CP1-1-18-SVUCR/L-11		18	13	7	22	23		
CP2-20-SVUCR/L-11		20	14	6	25	25		
CP2-20-SVUCR/L-16	VCMT160404	20	21	8	25	32	M4	T15
CP3-25-SVUCR/L-16		25	20.5	4	28	34		
CP4-32-SVUCR/L-16		32	22.5	6	35	40		
CP5-40-SVUCR/L-16		40	27	6	38	48		

提供訂製特殊車刀頭 Customized removable cutting head is available.

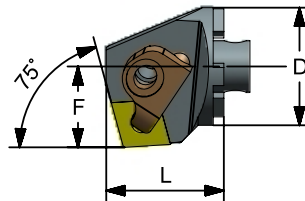
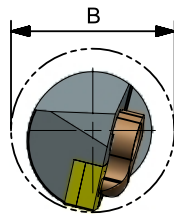
# 可換式車刀頭

## Removable Cutting Head

Invention Patent 發明專利  
I1638692/ I665038/ I606877



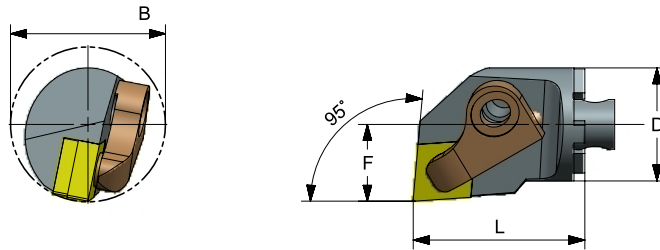
**YCKN**



Order No.	Insert	Dimensions (mm)					Clamp	Clamp Screw	Spring	Shim	Shim Screw	Wrench
Right	80°	D	F	K	L	B						
CP2-20-YCKNR/L-09	CN..090404	20	13	15	25	26	D-CLN2	M1	AD0G	-	-	T15
CP3-25-YCKNR/L-09		25	17	12	28	32						
CP4-32-YCKNR/L-12	CN..120404	32	32	17	35	40	D-CLN	M6	AD01	GMC-422-4	M5	LW050
CP5-40-YCKNR/L-12		40	40	15	38	50						

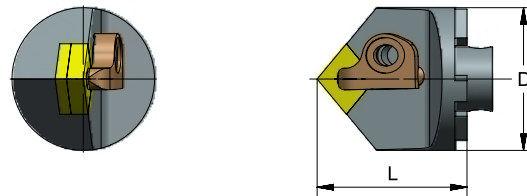
# 可換式車刀頭 Removable Cutting Head

## YCLN



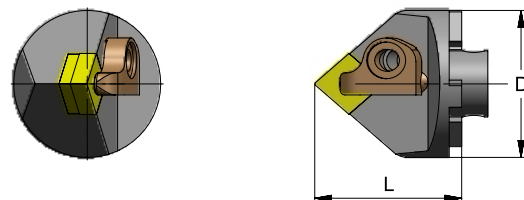
Order No.	Insert	Dimensions (mm)					Clamp	Clamp Screw	Spring	Shim	Shim Screw	Wrench
Right		D	F	K	L	B						
CP2-20-YCLNR/L-09	CN..090404	20	13	15	25	26	D-CLN2	MI	AD0G	-	-	T15
CP3-25-YCLNR/L-09		25	17	12	28	32						
CP4-32-YCLNR/L-12	CN..120404	32	22	17	35	40	D-CLN	M6	AD01	GMC-422-4	M5	LW050
CP5-40-YCLNR/L-12		40	27	15	38	50						

## YCMN



Order No.	Insert	Dimensions (mm)				Clamp	Clamp Screw	Spring	Shim	Shim Screw	Wrench
Right		D	F	K	L						
CP4-32-YCMN/L-12	CN..120404	32	0	15	35	D-CLN	M6	AD01	GMC-422-4	M5	LW050
CP5-40-YCMN/L-12		40	0	15	38						

## YCNN



Order No.	Insert	Dimensions (mm)				Clamp	Clamp Screw	Spring	Shim	Shim Screw	Wrench
Right		D	F	K	L						
CP4-32-YCNN/L-12	CN..120404	32	0	15	35	D-CLN	M6	AD01	GMC-422-4	M5	LW050
CP5-40-YCNN/L-12		40	0	15	38						

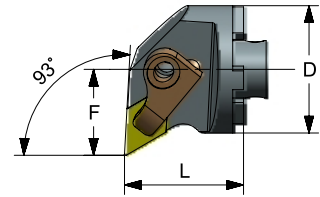
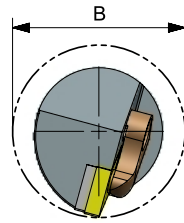
提供訂製特殊車刀頭 Customized removable cutting head is available.



# 可換式車刀頭

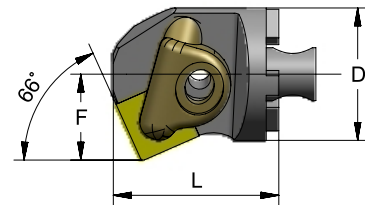
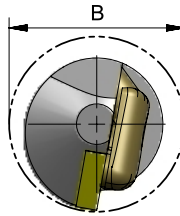
## Removable Cutting Head

### YDUN



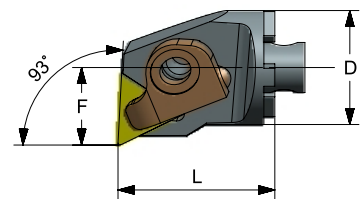
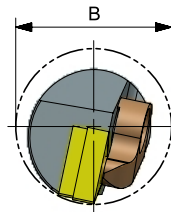
Order No.	Insert	Dimensions (mm)					Clamp	Clamp Screw	Spring	Shim	Shim Screw	Wrench
Right		D	F	K	L	B						
CP2-20-YDUNR/L-1104	DN..110404	20	13	15	25	26	D-CLN2	MI	AD0G	-	-	T15
CP3-25-YDUNR/L-1104		25	17	12	28	32						
CP4-32-YDUNR/L-1506	DN..150604	32	22	17	35	40	D-CLN	M6	AD01	GMC-422-4	M5	LW050
CP5-40-YDUNR/L-1506		40	27	15	38	50						

### YSKN



Order No.	Insert	Dimensions (mm)					Clamp	Clamp Screw	Spring	Shim	Shim Screw	Wrench
Right		D	F	K	L	B						
CP2-20-YSKNR/L-09	SN..090404	20	13	15	25	26	D-CLN2	MI	AD0G	-	-	T15
CP3-25-YSKNR/L-09		25	17	12	28	32						
CP4-32-YSKNR/L-12	SN..120404	32	22	17	35	40	D-CLN	M6	AD01	GMC-422-4	M5	LW050
CP5-40-YSKNR/L-12		40	27	15	38	50						

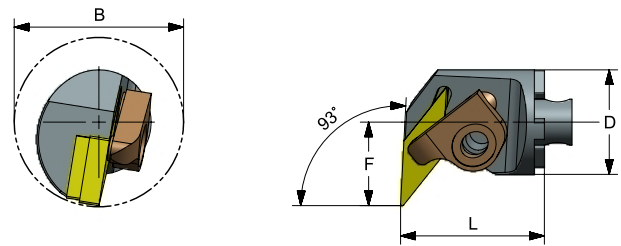
### YTUN



Order No.	Insert	Dimensions (mm)					Clamp	Clamp Screw	Spring	Shim	Shim Screw	Wrench
Right		D	F	K	L	B						
CP2-20-YTUNR/L-11	TN..110404	20	13	15	25	26	D-CLN2	MI	AD0G	-	-	T15
CP3-25-YTUNR/L-11		25	17	12	28	32						
CP4-32-YTUNR/L-16	TN..160404	32	22	17	35	40	D-CLN	M6	AD01	GMC-422-4	M5	LW050
CP5-40-YTUNR/L-16		40	27	15	38	50						

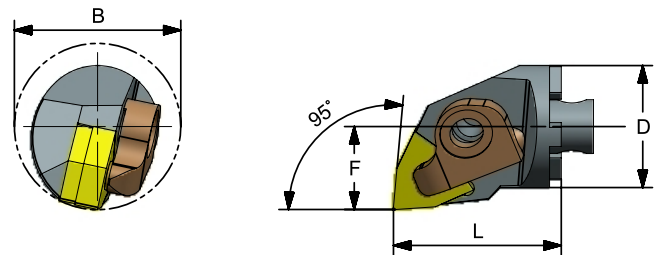
## 可換式車刀頭 Removable Cutting Head

■ YVUN



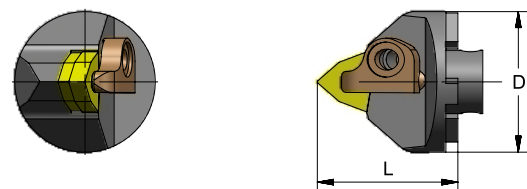
Order No.	Insert	Dimensions (mm)					Clamp	Clamp Screw	Spring	Shim	Shim Screw	Wrench
		D	F	K	L	B						
Right												
CP4-32-PVUNR/L-16	VN..160404	32	22	10	39	39	D-VJN-1	M6	AD01	GMV-322	M4	LW050
CP5-40-PVUNR/L-16		40	27	10	40	48						

■ YWLN



Order No.	Insert	Dimensions (mm)					Clamp	Clamp Screw	Spring	Shim	Shim Screw	Wrench
		D	F	K	L	B						
Right												
CP2-20-YWLNLR/L-06	WNMG0604	20	13	15	25	26	D-CLN2	M1	AD0G	-	-	T15
CP3-25-YWLNLR/L-06		25	17	12	28	32						
CP4-32-YWLNLR/L-08	WNMG0804	32	22	17	35	40	D-CLN	M6	AD01	GMC-422-4	M5	LW050
CP5-40-YWLNLR/L-08		40	27	15	38	50						

■ YWNN



Order No.	Insert	Dimensions (mm)				Clamp	Clamp Screw	Spring	Shim	Shim Screw	Wrench
		D	F	K	L						
Right											
CP4-32-YWNN/L-12	CN..120404	32	0	15	35	D-CLN	M6	AD01	GMC-422-4	M5	LW050
CP5-40-YWNN/L-12		40	0	15	38						

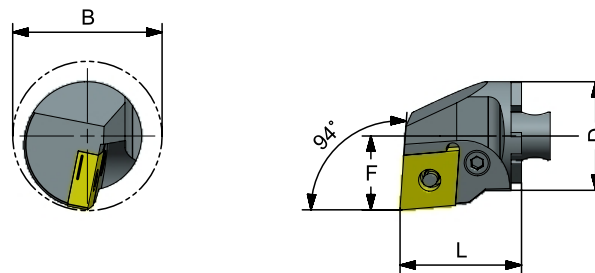
提供訂製特殊車刀頭 Customized removable cutting head is available.



# 可換式車刀頭

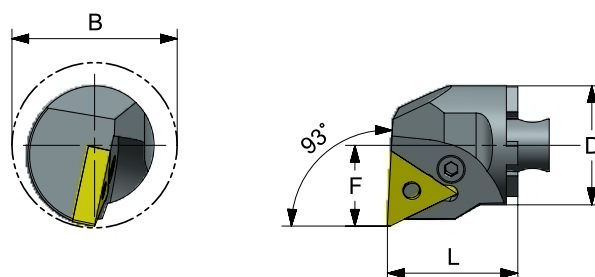
## Removable Cutting Head

### PCLN



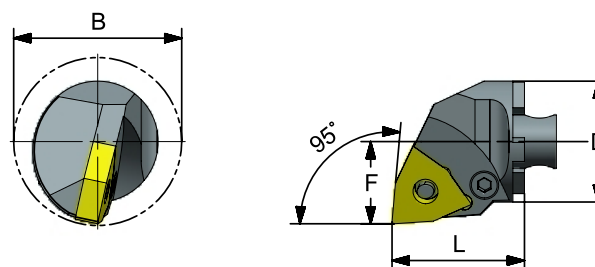
Order No.	Insert	Dimensions (mm)					Parts			Wrench
		D	F	K	L	B				
Right										
CP2-20-PCLNR/L-12	CN..120404	20	13	12	29	24	GPC4	LSP3	GSL14	LW025
CP3-25-PCLNR/L-12		25	17	11	32	31				
CP4-32-PCLNR/L-12		32	22	11	33	39				
CP5-40-PCLNR/L-12		40	27	10	37	48				

### PTUN



Order No.	Insert	Dimensions (mm)					Parts			Wrench
		D	F	K	L	B				
Right										
CP2-20-PTUNR/L-16	TN..160404	20	13	14	27	24	GPC3	LSP2	GSL14	LW025
CP3-25-PTUNR/L-16		25	17	12	31	31				
CP4-32-PTUNR/L-16		32	22	10	35	39				
CP5-40-PTUNR/L-16		40	27	10	38	48				

### PWLN



Order No.	Insert	Dimensions (mm)					Parts			Wrench
		D	F	K	L	B				
Right										
CP2-20-PWLN/L-08	WN..080404	20	13	14	25	24	GPC4	LSP3	GSL17	LW025
CP3-25-PWLN/L-08		25	17	12	32	31				
CP4-32-PWLN/L-08		32	22	10	35	39				
CP5-40-PWLN/L-08		40	27	8	37	48				

# 組合式抗震車刀 Combination Type Anti-Vibration Boring Bar

Invention Patent 發明專利  
I419764

Damper system  
制震器



Material: SCM440  
材質: 紅十字合金鋼  
Hardness: HRC 42°  
硬度: HRC 42度

## Features 特色

- 01. With coolant Hole.  
有內冷水孔
- 02. With coolant system to extend tool life span and good cutting surface.  
中心出水延長刀桿壽命並獲得良好的表面粗糙度
- 03. The tool is off center design and suitable for different diameter machining.  
刀桿採偏心式設計, 適合異徑加工
- 04. The front boring bar can be replaced freely ( Boring bar with / without anti-vibration / carbide boring bar / left or right hand boring bar ).  
小徑刀桿可選用任意品牌刀桿, 左右手刀桿皆可

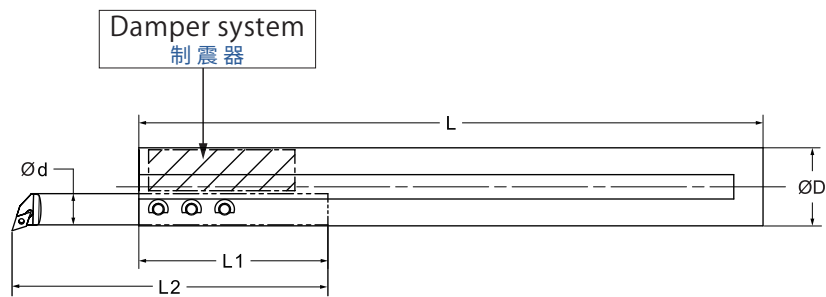
Ratio	Order No.	ΦD (mm)	Φd (mm)	L (mm)	L1 (mm)	懸身長 L2 (mm)
4D	MT32-S12H	H2	12	160	95	120
	MT32-S16H	32	16	160	95	175
	MT40-S12H	40	12	180	115	224
	MT40-S16H	40	16	180	115	280
	MTI 0-S20H	40	20	400	120	350
	MT5€S1Î H	50	16	200	95	175
	MTÍ €S2€H	50	20	200	115	224
	MTÍ €SĞ H	50	25	200	115	280
	MTÎ 0-S20H	60	20	200	120	350
	MTÎ 0-SĞ H	60	25	200	115	280
	MTÎ 0-SHGH	60	32	200	120	350

提供訂製特殊車刀頭 Customized removable cutting head is available.

# 組合式抗震車刀

## Combination Type Anti-Vibration Boring Bar

Invention Patent 發明專利  
I419764



Ratio	Order No.	ΦD (mm)	Φd (mm)	L (mm)	L1 (mm)	懸身長 L2 (mm)
6D	MT20-S08L-200	20	8	200	95	120
7D	MT25-S10L-200	25	10	200	95	175
	MT32-S12L-280	32	12	280	115	224
	MT40-S16L-320	40	16	320	115	280
	MT50-S20L-400	50	20	400	120	350
	MT60-S25L-540	60	25	540	120	420
	MT80-S32L-680	80	32	680	120	560
10D	MT100-S32L-1500	100	32	1500	250	1000

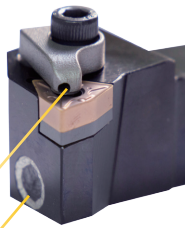
# Y型(出水)(抗震)外徑車刀 Y-Type (Anti-Vibration) External Turning Tool (with Coolant Hole)

Invention Patent 發明專利  
US8371776 / I638692 / I419764

Material: SNCM439(Alloy Steel)  
材質: 藍十字合金鋼  
Hardness: HRC 42°  
硬度: HRC 42度

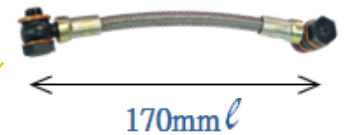


Coolant hole 出水孔	2.5mm	1.8mm
Pump 水壓泵浦	≤ 20 bar	≥ 40 bar



Damper system  
制震器

High pressure  
water spray pipe  
高壓噴水管



## 01. Anti-Vibration x Coolant Hole 有抗震+有出水:

- With high pressure water spray pipe, using high pressure coolant system, less built-up edge. 搭配高壓噴水管, 使用高壓中心出水, 不易產生積屑瘤
- Increasing the effect of lubrication and cooling, solving the problem of chip removal and chip breaking. 增加潤滑及降溫效果, 解決排屑及斷屑問題
- Less insert consumption, optimizing the workpiece surface. 減少刀片消耗, 優化工件表面粗糙度
- Resetting insert accurately, changing insert quickly. 重複定位刀片準確, 替換刀片快速

## 02. No Anti-Vibration x Coolant Hole 沒抗震+有出水:

- With high pressure water spray pipe, using high pressure coolant system, less built-up edge. 搭配高壓噴水管, 使用高壓中心出水, 不易產生積屑瘤
- Increasing the effect of lubrication and cooling, solving the problem of chip removal and chip breaking. 增加潤滑及降溫效果, 解決排屑及斷屑問題
- Resetting insert accurately, changing insert quickly. 重複定位刀片準確, 替換刀片快速

## 03. Anti-Vibration x No Coolant Hole 有抗震+沒出水:

- Less insert consumption, optimizing the workpiece surface. 減少刀片消耗, 優化工件表面粗糙度
- Resetting insert accurately, changing insert quickly. 重複定位刀片準確, 替換刀片快速

## 04. No Anti-Vibration x No Coolant Hole 沒抗震+沒出水:

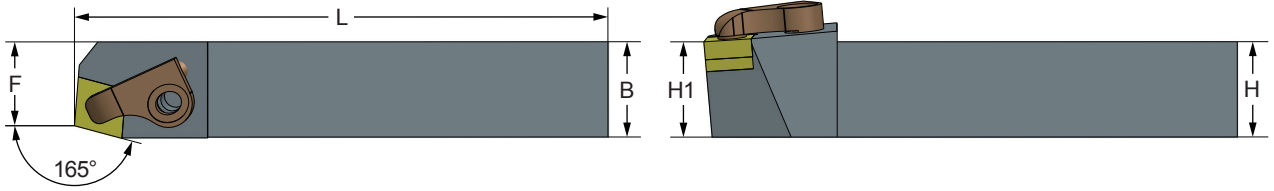
- Resetting insert accurately, changing insert quickly. 重複定位刀片準確, 替換刀片快速

提供訂製特殊柄徑及特殊長度刀桿 Customized tool diameter and length are available.

# Y型(出水)(抗震)外徑車刀

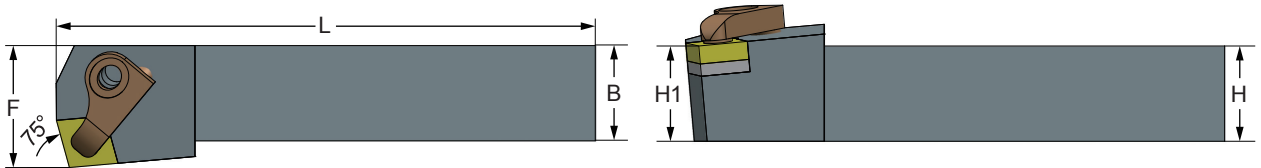
## Y-Type (Anti-Vibration) External Turning Tool (with Coolant Hole)

### YCBN



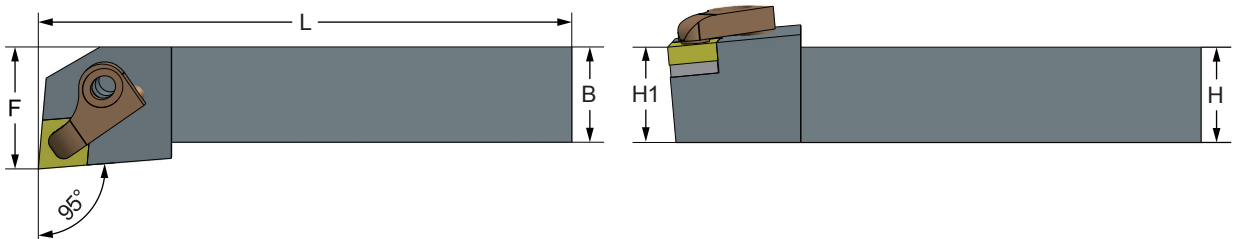
Order No.	Dimensions (mm)				Insert	Clamp	Clamp Screw	Spring	Shim	Shim Screw	Wrench	
	Right / Left	H/H1	B	L								F
YCBNR/L-2020K12	Right / Left	20	20	125	17	CNMG1204	D-CBN	M6	AD01	GMC-422-4	M5	LW050
YCBNR/L-2525M12	25	25	145	22								
YCBNR/L-3232P12	32	32	170	29								

### YCKN



Order No.	Dimensions (mm)				Insert	Clamp	Clamp Screw	Spring	Shim	Shim Screw	Wrench	
	Right / Left	H/H1	B	L								F
YCKNR/L-2020K12	Right / Left	20	20	125	25	CNMG1204	D-CKN	M6	AD01	GMC-422-4	M5	LW050
YCKNR/L-2525M12	25	25	145	32								
YCKNR/L-3232P12	32	32	170	40								

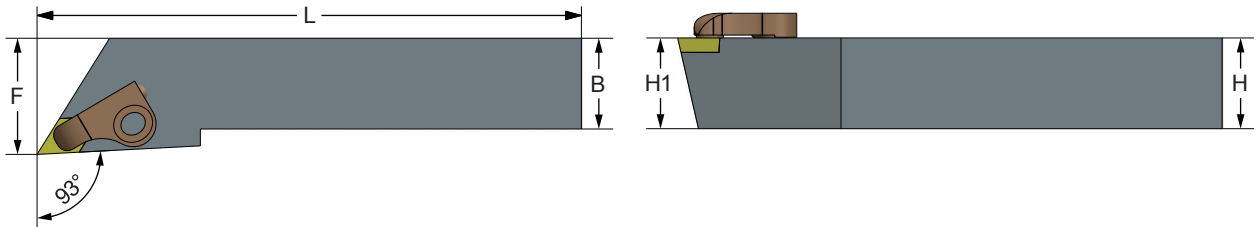
### YCLN



Order No.	Dimensions (mm)				Insert	Clamp	Clamp Screw	Spring	Shim	Shim Screw	Wrench	
	Right / Left	H/H1	B	L								F
YCLNR/L-2020K12	Right / Left	20	20	125	25	CNMG1204	D-CLN	M6	AD01	GMC-422-4	M5	LW050
YCLNR/L-2525M12	25	25	145	32								
YCLNR/L-3232P12	32	32	170	40								

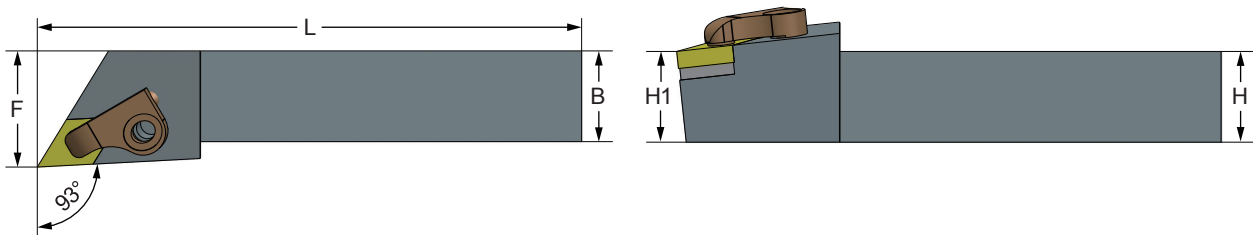
# Y型出水抗震外徑車刀 Y-Type (Anti-Vibration) External Turning Tool (with Coolant Hole)

## YDJC



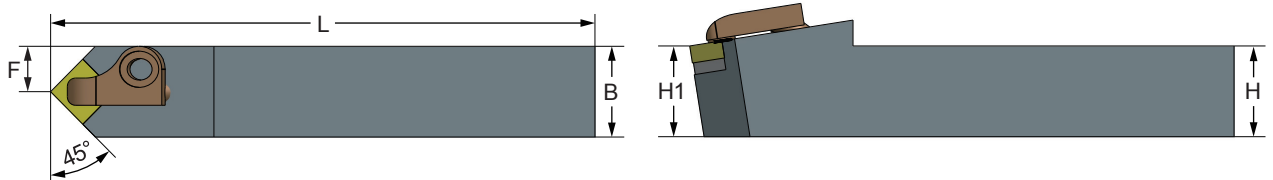
Order No.	Dimensions (mm)				Insert	Clamp	Clamp Screw	Spring	Wrench
Right / Left	H/H1	B	L	F					
YDJCR/L-2020K11	20	20	125	25	DCMT11T3	D-DJC	M6	AD01	LW050
YDJCR/L-2525M11	25	25	145	32					

## YDJN



Order No.	Dimensions (mm)				Insert	Clamp	Clamp Screw	Spring	Shim	Shim Screw	Wrench
Right / Left	H/H1	B	L	F							
YDJNR/L-2020K1504	20	20	125	25	DNMG1504	D-DJN	M6	AD01	GW730	M4	LW050
YDJNR/L-2525M1504	25	25	145	32							

## YSNN



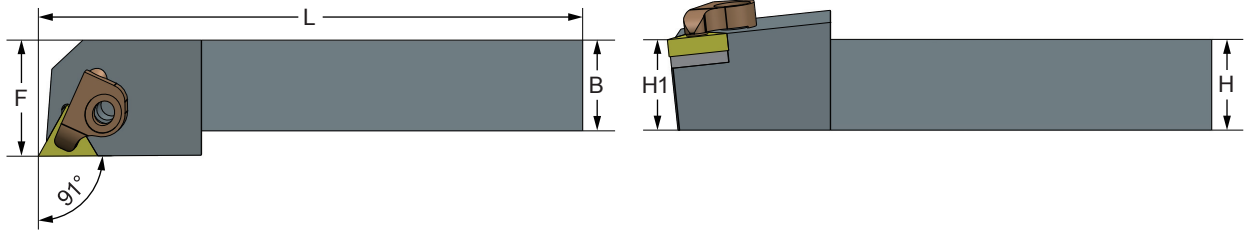
Order No.	Dimensions (mm)				Insert	Clamp	Clamp Screw	Spring	Shim	Shim Screw	Wrench
Right / Left	H/H1	B	L	F							
YSNNN-2020K12	20	20	125	10	SNMG1204	D-SNN	M6	AD01	GMS-432	M6	LW050
YSNNN-2525M12	25	25	145	12.5							

提供訂製特殊柄徑及特殊長度刀桿 Customized tool diameter and length are available.



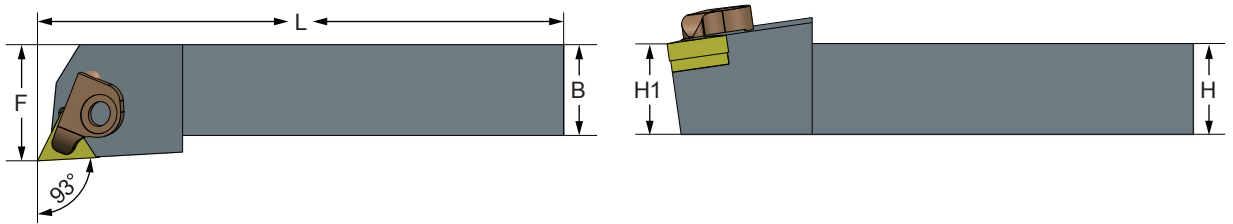
# Y型(出水)(抗震)外徑車刀 Y-Type (Anti-Vibration) External Turning Tool (with Coolant Hole)

## ■ YTGN



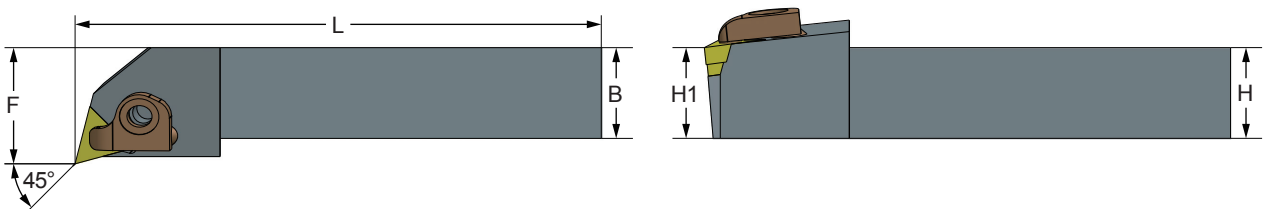
Order No.	Dimensions (mm)				Insert	Clamp	Clamp Screw	Spring	Shim	Shim Screw	Wrench
	Right / Left	H/H1	B	L							
YTGNR/L-2020K16	20	20	125	25	TNMG1604	D-TGN	M6	AD01	GMT-321-1	M4	LW050
YTGNR/L-2525M16	25	25	145	32							

## ■ YTJN-1



Order No.	Dimensions (mm)				Insert	Clamp	Clamp Screw	Spring	Shim	Shim Screw	Wrench
	Right / Left	H/H1	B	L							
YTJNR/L-2020K16-1	20	20	125	25	TNMG1604	D-TJN	M6	AD01	GMT-321-1	M4	LW050
YTJNR/L-2525M16-1	25	25	145	32							
YTJNR/L-3232P16-1	32	32	170	40							

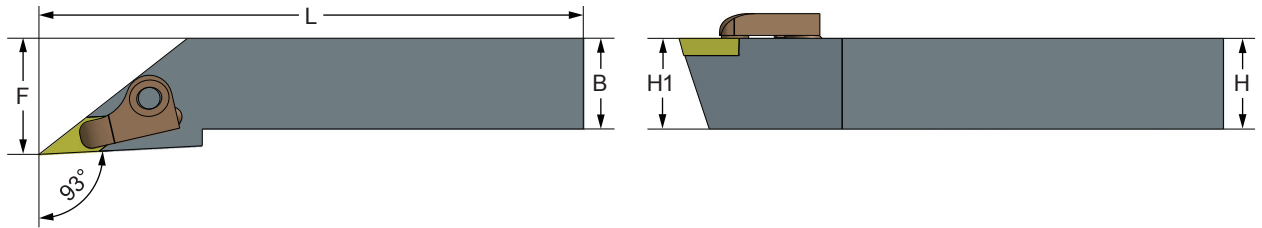
## ■ YTQN



Order No.	Dimensions (mm)				Insert	Clamp	Clamp Screw	Spring	Shim	Shim Screw	Wrench
	Right / Left	H/H1	B	L							
YTQNR/L-2020K16	20	20	125	25	TNMG1604	D-TQN	M6	AD01	GMT-321-1	M4	LW050
YTQNR/L-2525M16	25	25	145	32							

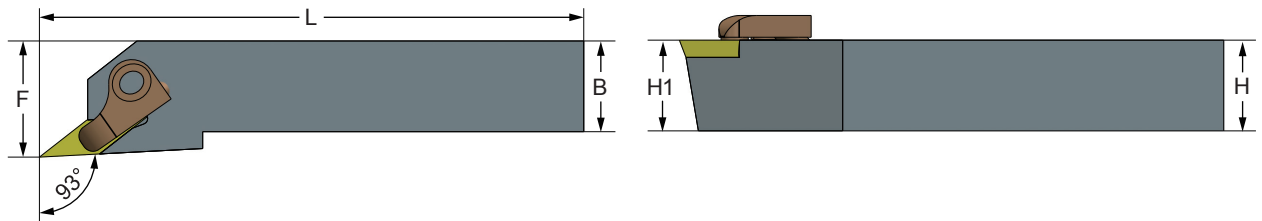
## Y型(出水)(抗震)外徑車刀 Y-Type (Anti-Vibration) External Turning Tool (with Coolant Hole)

### YVJB



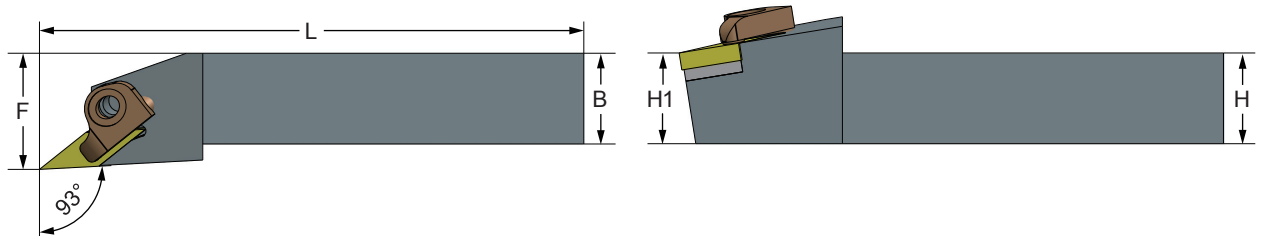
Order No.	Dimensions (mm)				Insert	Clamp	Clamp Screw	Spring	Wrench	
	Right / Left	H/H1	B	L						F
YVJBR/L-2020K16		20	20	125	25	VBMT1604	D-VJB	M6	AD01	LW050
YVJBR/L-2525M16		25	25	145	32					

### YVJC



Order No.	Dimensions (mm)				Insert	Clamp	Clamp Screw	Spring	Wrench	
	Right / Left	H/H1	B	L						F
YVJCR/L-2020K16		20	20	125	25	VCMT1604	D-VJC	M6	AD01	LW050
YVJCR/L-2525M16		25	25	145	32					
YVJCR/L-2525M11		25	25	145	32					

### YVJN

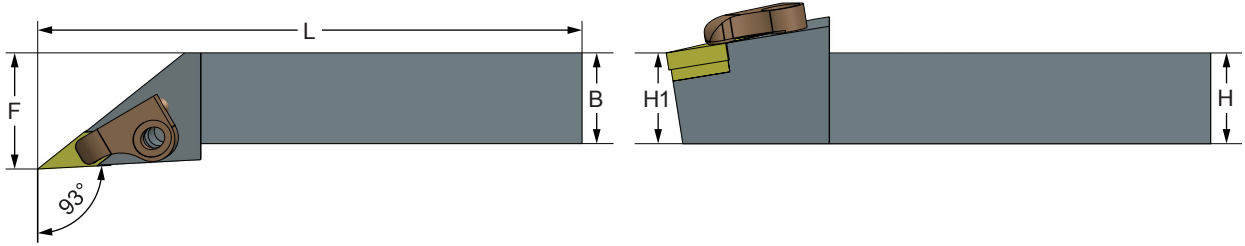


Order No.	Dimensions (mm)				Insert	Clamp	Clamp Screw	Spring	Shim	Shim Screw	Wrench	
	Right / Left	H/H1	B	L								F
YVJNR-2020K16		20	20	125	25	VNMG1604	D-VJN-1	M6	AD01	GMV-322	M4	LW050
YVJNR-2525M16		25	25	145	32							

提供訂製特殊柄徑及特殊長度刀桿 Customized tool diameter and length are available.

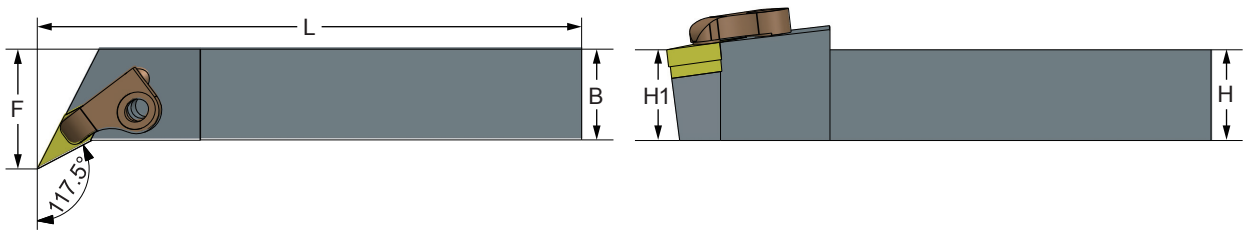
# Y型(出水)(抗震)外徑車刀 Y-Type (Anti-Vibration) External Turning Tool (with Coolant Hole)

## YVJN-CB



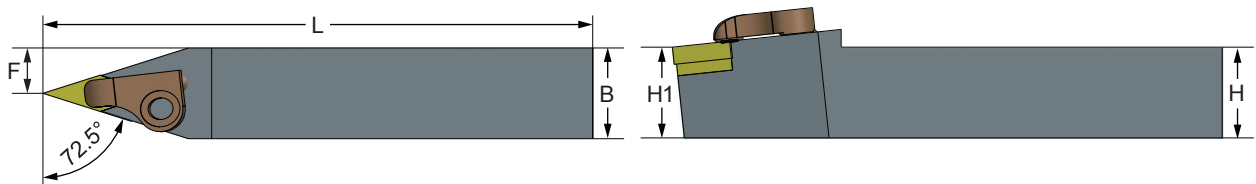
Order No.	Dimensions (mm)				Insert	Clamp	Clamp Screw	Spring	Shim	Shim Screw	Wrench
	Right / Left	H/H1	B	L							
YVJNR/L-2020K16-CB	20	20	125	25	VNMG1604	D-VJN	M6	AD01	GMV-322	M4	LW050
YVJNR/L-2525M16-CB	25	25	145	32							

## YVQN



Order No.	Dimensions (mm)				Insert	Clamp	Clamp Screw	Spring	Shim	Shim Screw	Wrench
	Right / Left	H/H1	B	L							
YVQNR/L-2020K16	20	20	125	25	VNMG1604	D-VQN	M6	AD01	GMV-322	M4	LW050
YVQNR/L-2525M16	25	25	145	32							

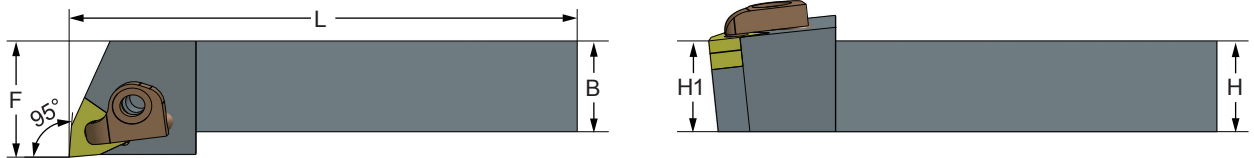
## YVVNN



Order No.	Dimensions (mm)				Insert	Clamp	Clamp Screw	Spring	Shim	Shim Screw	Wrench
	Right / Left	H/H1	B	L							
YVVNN-2020K16	20	20	125	10	VNMG1604	D-VVN	M6	AD01	GMV-322	M4	LW050
YVVNN-2525M16	25	25	145	12.5							

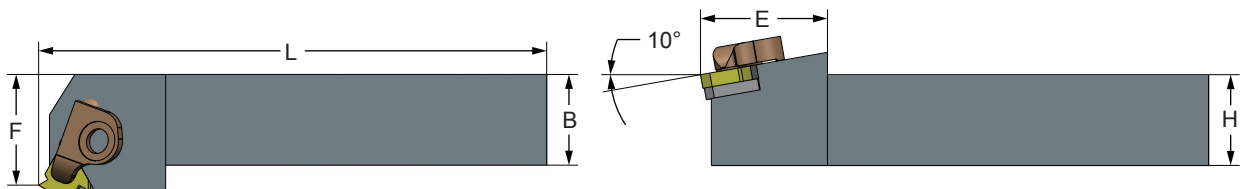
# Y型(出水)(抗震)外徑車刀 Y-Type (Anti-Vibration) External Turning Tool (with Coolant Hole)

## YWLNR-1



Order No.	Dimensions (mm)				Insert	Clamp	Clamp Screw	Spring	Shim	Shim Screw	Wrench	
	Right / Left	H/H1	B	L								F
YWLNR/L-2020K08-1		20	20	125	25	WNMG0804	D-WLN	M6	AD01	GMW-422-1	M5	LW050
YWLNR/L-2525M08-1		25	25	145	32							
YWLNR/L-3232P08-1		32	32	170	40							

## YER



Order No.	Dimensions (mm)					Insert	Clamp	Clamp Screw	Spring	Shim	Shim Screw	Wrench
	Right / Left	H	B	L	E							
YER-2525M16-0°	25	25	135	30	32	ER16	D-ER	M6	AD01	GMG-321R	M4	LW050
YER-2525M16-0.5°												
YER-2525M16-1°												
YER-2525M16-1.5°												
YER-2525M16-2°												
YER-2525M16-2.5°												
YER-2525M16-3°												
YER-2525M16-3.5°												

提供訂製特殊柄徑及特殊長度刀桿 Customized tool diameter and length are available.

## 訂製產品

Custom-Made Product

- 抗震搪孔刀桿  
Anti-Vibration Boring Tool
- 抗震銑刀桿  
Anti-Vibration Milling Tool
- 抗震研磨棒  
Anti-Vibration Grinding Tool
- 特殊組合式抗震刀桿  
Special Combination Anti-Vibration Tool





**Monkula**

猛庫拉制震股份有限公司

MONKULA ENTERPRISE CO., LTD.

📍 411 台中市太平區正光街197巷15號

☎ +886 4 2271 4566

📠 +886-4-2271-4517

✉ monkula.tw@gmail.com

sales.monkula@gmail.com

🌐 <http://www.monkula.com.tw>

📷 antivibrationtools



LINE



Marshal Lin  
Facebook



Company  
Facebook



Website